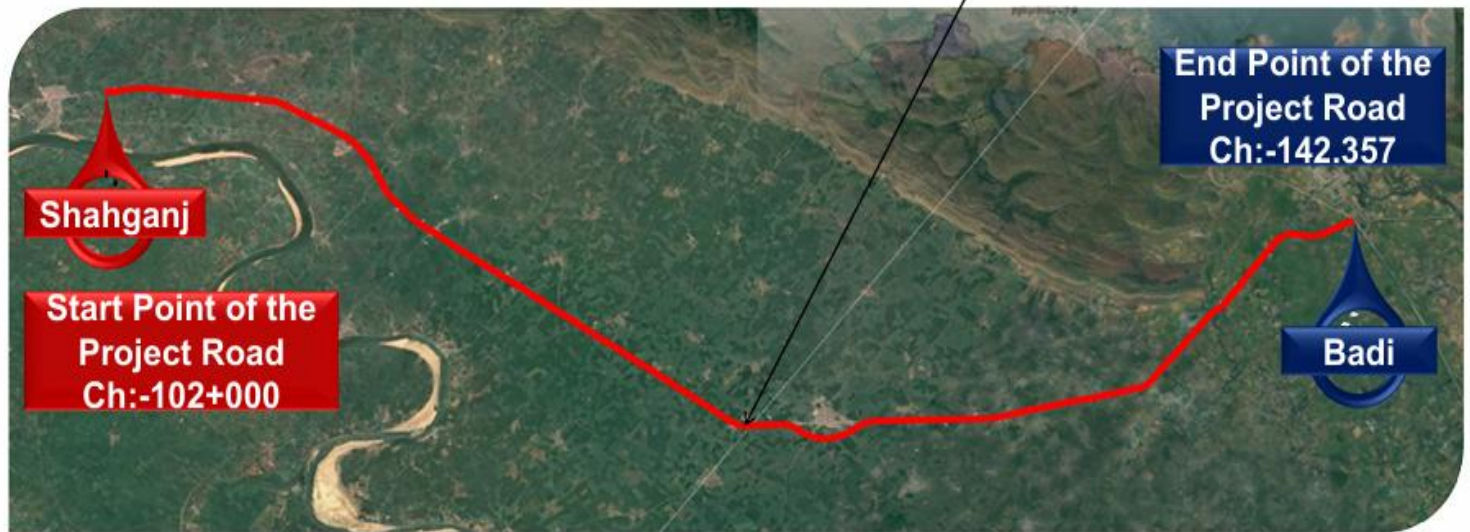
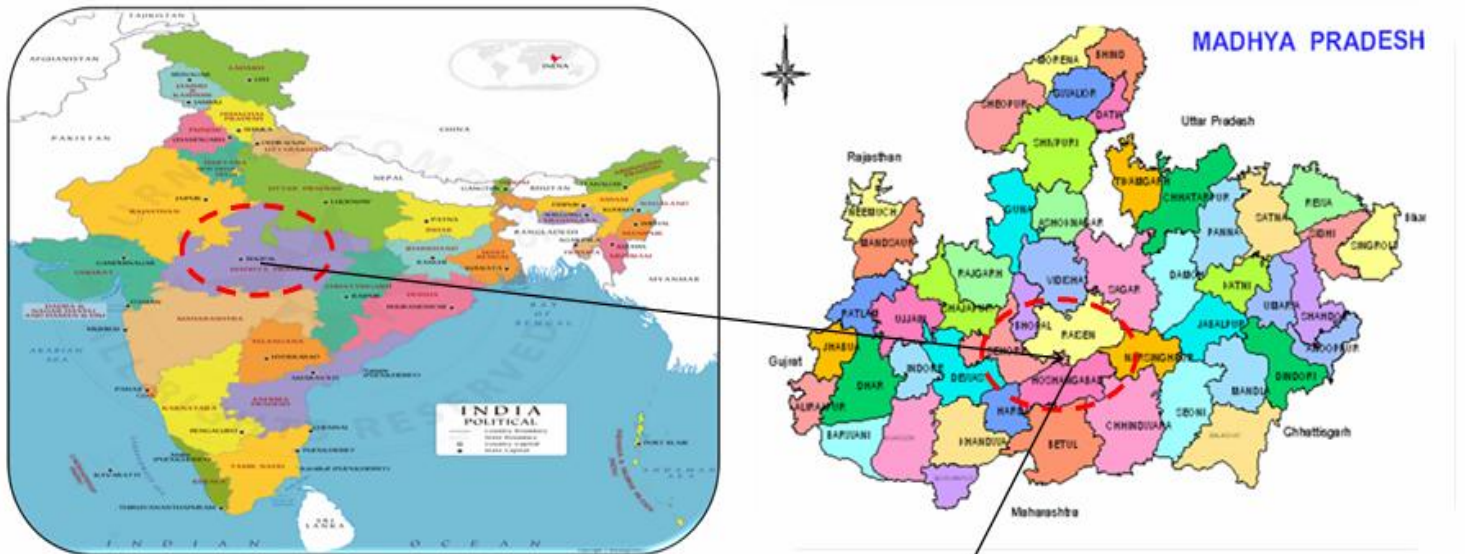


# SHAHGANJ BADI HIGHWAYS PVT. LTD.

## MONTHLY PROGRESS REPORT

September-2025



NAME OF AUTHORITY : NATIONAL HIGHWAYS AUTHORITY OF INDIA

NAME OF CONCESSIONAIRE : SHAHGANJ BADI HIGHWAYS PVT. LTD.

NAME OF EPC CONTRACTOR : MCC INFRATECH PVT. LTD

NAME OF INDEPENDENT ENGINEER : SAPTAGON ASIA PVT. LTD.

**Construction work of 4-laning of Shahganj bypass end to Badi (Package-IV) of NH-146B from design km 102.000 to design km 142.357 (Design Length 40.357 km) under NH(O) in the State of Madhya Pradesh on Hybrid Annuity Mode**

**MONTHLY PROGRESS REPORT - SEPTEMBER - 2025**

**Index**

<b>S.No.</b>	<b>Description</b>	<b>From</b>		<b>To</b>
1	Executive Summary	1	to	1
2	Salient Features of Projects	2	to	2
3	Project Milestone	3	to	4
4	Location Map	5	to	5
5	Key Plan	6	to	6
6	Unresolved Issues/Constraints	7	to	8
7	Strip Plan (Summary)	9	to	9
8	Progress Status Structure	10	to	10
9	Land Acquisition and clearances	11	to	11
10	Status of Utility Shifting	12	to	12
11	Mobilization Resources	13	to	19
12	Permissions and Approval	20	to	20
13	Drawing Status	21	to	21
14	Physical Progress	22	to	23
15	Strip Chart	24	to	28
16	Safety and Health	29	to	31
17	Quality	32	to	44
18	Change of Scope	45	to	45
19	Accident Report	46	to	46
20	Photographs	47	to	51

# Executive Summary

## Construction progress in current month

### Summary of Progress:-

1. Total length of the Project is 40.357 Km. with Total Bid Project Cost 519 Cr. Appointed Date declared on 25.03.2025 and scheduled date of completion of construction is 24.03.2027 (with 730 days construction period). M/s Shahganj Badi Highways Pvt Ltd started work at site.

### 2. LA Status/Handing Over of Length :-

Total -32.800 km. Handed over and 7.55km balance.

Key reporting metrics	Value%/Amount
<b>A- Physical Progress</b>	
Scheduled Physical Progress (%)	100.00%
Cumulative Physical Progress upto current month (%)	7.60%
Current Month Physical Progress (%)	0.71%
Cumulative Expenditure till date (Rs Cr) as per Construction cost @ 519 Cr.	39.444
Tests passed as % of total tests witnessed by IE	20.64%

## Project Overview

### Salient Features of Project

<b>Project Name</b>	Construction work of 4-laning of Shahganj bypass end to Badi (Package-IV) of NH-146B from design km 102.000 to design km 142.357 (Design Length 40.357 km) under NH(O) in the State of Madhya Pradesh on Hybrid Annuity Mode
<b>NH No. (New/ Old)</b>	146B
<b>Mode of the Execution (BOT Toll/ BOT Annuity/ EPC/ HAM/ Item Rate/ Others)</b>	Hybrid Annuity Mode
<b>No. of Lanes/ Configuration</b>	Four Lane with Paved Shoulder
<b>Length of the Project (in Km)</b>	40.357 Km.
<b>Total Project Cost/ Civil Construction Cost/ Contract cost (in Cr)</b>	Rs. 519
<b>Total EPC Cost (in Cr)</b>	Rs. 519
<b>No. of Bypasses (Name of Town, Length)</b>	4.807 Km (Baktra 2.500 Km + Badi 2.307 Km)
<b>No. of Major Bridges (Number and Location)</b>	1 ( Chainage 109+550)
<b>No. of Toll Plazas (Number and Location)</b>	1 (Chainage 114+515)
<b>DPR Consultant Name</b>	M/s Lion Engineering Consultants
<b>Contractor Name (SPV &amp; Parent Company)</b>	M/s MCC Infratech Pvt. Ltd.
<b>Date of Award (LOA Date)</b>	15 Mar. 2024
<b>Appointed Date</b>	25 Mar. 2025
<b>Construction Period (in Days)</b>	(730 Days)
<b>Scheduled Date of Completion</b>	24 Mar. 2027
<b>Independent Engineer</b>	M/s Saptagon Asia Pvt. Ltd.

## Project Milestones

Project Milestone	Date	Physical Progress for achievement (%)	Date as per Approved EOT	Status	Remarks
Appointed Date	25-03-2025	Nil			
Milestone I	21-09-2025	20%		7.60%	
Milestone II	18-02-2026	35%			
Milestone III	16-09-2026	75%			
Scheduled Completion	24-03-2027	100%			

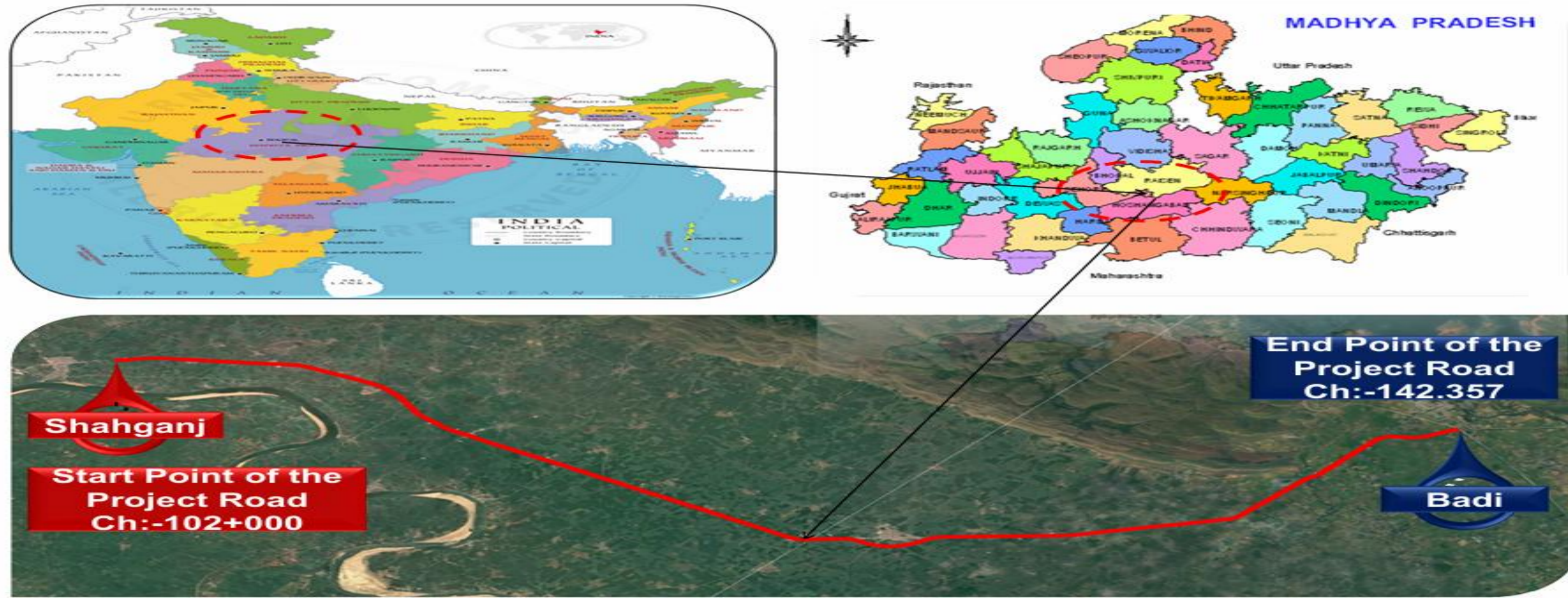
**Note :-** Physical Progress of Project Milestone-I is 7.60%, due to reasons as stated below:

- a) Delay in approval of Pavement Design .
- b) Rainy season started from July end onwards and no activity in Highway can start in monsoon period.

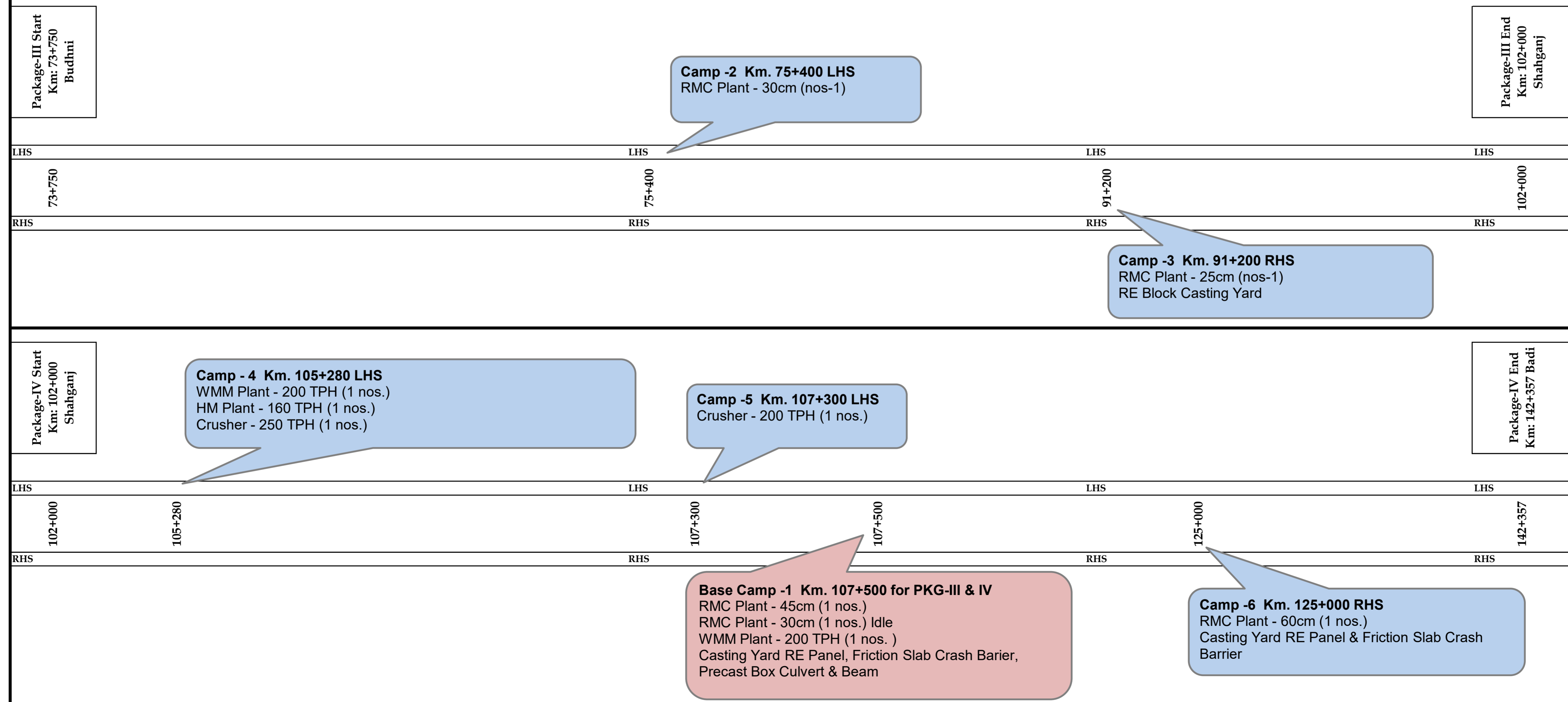
## Payment Milestones

Sr. No.	Payment Milestone	Status	Remarks
I	On achievement of 5% of Physical Progress	Achieved	MPC-1 on achievement of 5% is submitted vide letter no. SBHPL/NHAI/FY25-26/330
II	On achievement of 10% of Physical Progress		
III	On achievement of 20% of Physical Progress		
IV	On achievement of 30% of Physical Progress		
V	On achievement of 40% of Physical Progress		
VI	On achievement of 50% of Physical Progress		
VII	On achievement of 60% of Physical Progress		
VIII	On achievement of 70% of Physical Progress		
IX	On achievement of 80% of Physical Progress		
X	On achievement of 90% of Physical Progress		

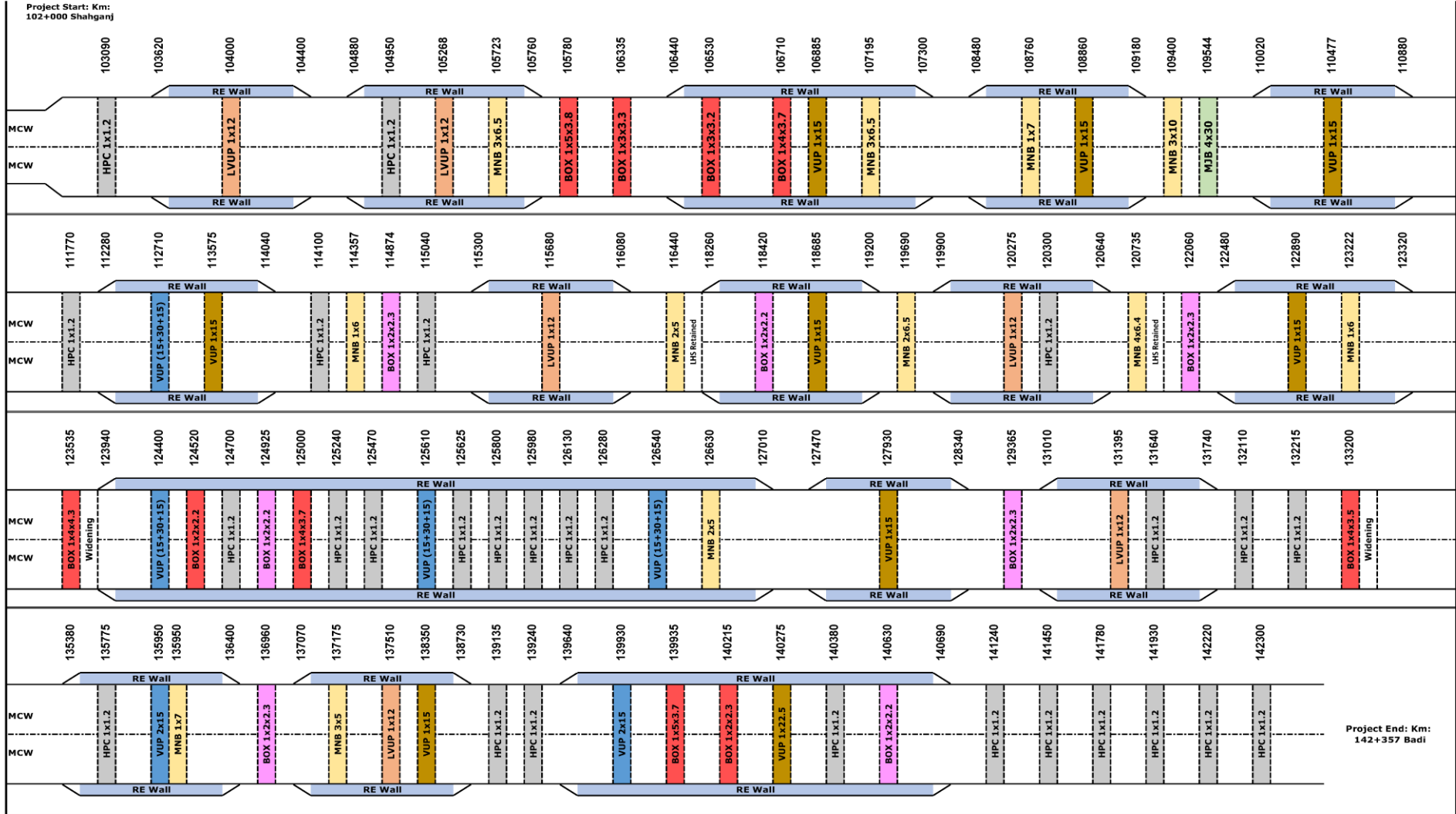
Camp Location Map



CAMP LOCATION PLAN



# Key Plan



Legend :-	Type	Nos
[Green Box]	MJB	1
[Yellow Box]	VUP (Single Span)	9
[Blue Box]	VUP (Multi Span)	6
[Light Blue Box]	LVUP	6
[Orange Box]	MNB	12

Legend :-	Type	Nos
[Red Box]	BC Precast	7
[Pink Box]	BC Cast-in-situ	10
[Grey Box]	HPC	27
[Blue Box]	Retaining Wall	1188
[Light Blue Box]	RE Wall	17,540
[Light Blue Box]	Toe Wall	740

Mtr.

Mtr.

# UNRESOLVED ISSUES/CONSTRIANTS

Sr. No.	Activity	Constraints	Remarks
1	Land Acquisition		
	A. Acquisition	Land possession work is in progress as per the instruction of NHAI Officials. However, at many locations Payment is being paid by the Authority but removal of encroachment is still to be removed. Force fully possession is in progress at site on handed over length.	Length of 7.55 Km. is effected as on 30.09.2025
	B. Encroachment	Dismantling of structure time to time is being carried out as per the instruction of NHAI Officials	
2	Utility Shifting		
	A. Electrical Utility Shifting	Nil	Estimates are approved and Supervision charges is deposited to Owing Department by Authority.
	B. PHED Utility Shifting	Nil	Estimates are submitted to Authority.

**Construction work of 4-laning of Shahganj bypass end to Badi (Package-IV) of NH-146B from design km 102.000 to design km 142.357 (Design Length 40.357 km) under NH(O) in the State of Madhya Pradesh on Hybrid Annuity Mode**

**Hindrance Status**

SR. NO.	CHAINAGE		AFFECTED LENGTH	NET AFFECTE WORKING LENGTH	SIDE	Description
	FROM	TO	(METER)			
1	103850	103970	120	120	BHS	Land not Available
2	103970	104100	130	130	BHS	Land not Available
3	104100	104600	500	500	BHS	Land not Available
4	108240	108560	320	320	BHS	Land not Available
5	108480	108780	300	300	BHS	Land not Available
6	109030	109380	350	350	BHS	Land not Available
7	110200	110880	680	680	BHS	Land not Available
8	111500	111790	290	290	BHS	Land not Available
9	111780	112220	440	440	BHS	Land not Available
10	112220	112980	760	760	BHS	Land not Available
11	115420	115730	310	310	BHS	Land not Available
12	118580	118960	380	380	BHS	Land not Available
13	119900	120250	350	350	BHS	Land not Available
14	120000	120650	650	650	BHS	Land not Available
15	127800	128100	300	300	BHS	Land not Available
16	130500	130910	410	410	BHS	Land not Available
17	131010	131450	440	440	BHS	Land not Available
18	131370	131690	320	320	BHS	Land not Available
19	137300	137800	500	500	BHS	Land not Available
<b>Total Length &gt;&gt;&gt;&gt;</b>			<b>7550 Mtr</b>	<b>7550 Mtr</b>		

## Strip Plan (Summary)

1. Land Acquisition Status			2. Length completed by layer (MCW)			3. Length completed by Layer (Service Road+ Slip Road)		
Description	Length / Area	% Total Pending Length/Area	Description	Length in (KM)	% Total Length	Description	Length in (KM) Both Sides	% Total Length
Total Length Scope Km.	40.357		Total Length Scope Km BHS.	79.108		Total Length Scope Km.	40.357	
Total Workfornt Unavailable Km. due to LAQ/Encroachment	7.55	18.7%	Total Length Completed	-	0.00%	Total Length Completed	-	0.00%
Pending Land Ha.	17.208		BC	-	0.00%	BC	-	0.00%
			DBM	-	0.00%	DBM	-	0.00%
Acq. Ha.	74.565	81.2%	AIL	-	0.00%	AIL	-	0.00%
			CTB	-	0.00%	CTB	0.340	0.84%
			CTSB/GSB	5.79	7.32%	CTSB/GSB		
			Sub-Grade	15.83	20.01%	Sub-Grade	-	0.00%

## Progress Status of Structure

DESCRIPTION	SCOPE OF WORK	WORK STATUS			
		COMPLETED	IN PROGRESS	BAL TO TAKEUP	REMARKS
Major Bridges	1		1		
Minor Bridges	12		7	5	
Light Vehicular Underpass	6		4	2	
Vehicular Underpass	15		7	8	
Box Culverts	17	2	10	5	
Pipe Culverts	27	8	15	4	
<b>TOTAL</b>	<b>78</b>	<b>10</b>	<b>44</b>	<b>24</b>	

**Land Acquisition and Clearances**  
**LA Summary**

S.No	Particulars	Area Of Land in HA.	Remarks
A	Total Land to be Acquire	192.117	
B	Existing Land	92.495	
C	Additional Land Required (C=A-B)	99.622	
D	Total 3G Award	91.773	
E	Total 3H	74.565	81.25%
F	Balance (F=D-E)	17.208	18.75%
G	Length Available for working (KM)	32.790 (KM)	

**Status of Utility Shifting****A - ELECTRICAL UTILITY (MPMKVVCL)**

Sr. No.	Description	Total Estimates	Total Estimates Submitted to Authority	Total Estimates Approved from Authority	Total Length Affected	Work Status	Remarks
		(Nos)	(Nos)	(Nos)	(KM.)		
1	33 KVA	19	19	19	61.75	8.5 Km. Wire Installation completed and balance work in progress. 10 Km. Pole Erection completed and balance work in progress.	Estimates are approved. Supervision charges deposited to Owning Department by Authority.
2	11 KV	16	16	16	53.48	4.8 Km Wire installation completed and balance in progress. 10 Km. Pole Erection completed and balance work in progress.	
3	LT Line	15	15	15	3.72	Pole Erection in progress.	
4	33 KVA Crossing	26	26	26			
5	11 KV Crossing	60	60	60			
6	LT Line Crossing	38	38	38			
7	Transformers and Sub Stations	64	64	64			

**B - WATER SUPPLY/SEWERAGE LINE (PHED)**

1	Water supply pipe line	9	9	0			Estimates are submitted to Authority for Approval.
---	------------------------	---	---	---	--	--	--

**C-TREE CUTTING STATUS (REVENUE & FOREST)**

SR. NO.	DESCRIPTION	TOTAL SCOPE	TOTAL CUT	TOTAL BALANCE TO CUT	REMARKS
		(NOS)	(NOS)	(NOS)	
1	Revenue Trees	1455	1455	0	Permission obtained and Tree cutting Completed.
<b>TOTAL</b>		<b>1455</b>	<b>1455</b>	<b>0</b>	

# Mobilization of Resources

SL. NO.	Equipment Name	Make	Model	Quantity	Deployment Year	Remarks
1	RMC PLANT	CONMAT	CP-30	1	2025	
2	RMC PLANT	CONMAT	CP-45	1	2025	
3	RMC PLANT	CONMAT	CP-60	1	2025	
4	Hot Mix Plant	APOLLO	APOLLO 200 TPH	1	2025	
5	WMM PLANT	APOLLO	APOLLO 200 TPH	1	2025	
6	CRUSHER PLANT	METSO	METSO 250 TPH	1	2025	
7	CRUSHER PLANT	TEREX	TEREX 200 TPH	1	2025	
8	WMM Paver	VOLVO	Paver 5.0 Mtr	1	2025	
9	DBM Paver	VOLVO	Paver 9.0 Mtr	1	2025	
10	DG Set 125 KVA	Mahindra	125 KVA	2	2025	
11	DG Set 200 KVA	SUDHIR CUMMINS	200 KVA	1	2025	
12	DG Set 500 KVA	CAT	500 KVA	2	2025	
13	DG Set 30 KVA	SUDHIR CUMMINS	30 KVA	5	2025	
14	DG Set 20 KVA	SUDHIR CUMMINS	20 KVA	5	2025	
15	Light Mast	CUMMINS	KG1-5AS3/5KVA	1	2025	
16	Hydraulic Broomer	BROOMER HYDRAULIC	ALLWIN	1	2025	
17	Soil Compactor	HAMM	311	7	2025	
18	Soil Compactor	DYNAPAC	CA385D	3	2025	
19	Baby Roller	CASE		1	2025	
20	Baby Roller	JCB		3	2025	
21	Tandom Roller	HAMM		1	2025	
22	Motor Grader	CAT	CATERPILLAR 120K2 SERIES 2	9	2025	
23	Motor Grader	CASE	CASE 845 B MOTER GRADER	2	2025	
24	Excavator	JCB		10	2025	
25	Wheel Loader	JCB	4374 & JCB INDIA	2	2025	
26	Dozer	CASE		1	2025	
27	Dozer	CAT		4	2025	
28	Hydra	ESCORT	TRX 1549 XT & ESCORT	3	2025	
29	Hyd. Crane	SANY	SANY	1	2025	
30	Trailer	BHARATBENZ	BHARATBENZ 3123R 8X2 BSIV	1	2025	
31	Trailer	TATA	LPS4018TC/32	2	2025	
32	Diesel Tanker	TATA	TATA SPC 709EX/38 BSIV	1	2025	
33	Diesel Tanker	Mahindra	BOLERO SC XL CBC 2WD	1	2025	
34	Boom Pressor	TATA	SIGNA 2823 K BS VI, 56WHD	1	2025	
35	Concrete Pump	SCHWING Stetter	DP-350	1	2025	
36	Tipper	TATA	LPK 2518 TC/38	30	2025	
37	Water Tanker	TATA	LPK 2518 TC/38	5	2025	
38	Transit Mixer	TATA	LPK 2518 TC/38	9	2025	
39	Backhoe Loader	JCB	JCB 3DX XTRA	3	2025	
40	Backhoe Loader	CAT	BACKHOE LOADER 2WD	1	2025	
41	LMV	Mahindra	SCORPIO S10 2.2	2	2025	
42	LMV	Mahindra	BOLERO	5	2025	
43	LMV	Toyota	FORTUNER	2	2025	
44	LMV	Mahindra	MAHINDRA BOLERO CAMPER	8	2025	

**Note: - Additional machinery shall be mobilised at site as per progress requirements.**

# Mobilization of Resources

SR. NO.	EMPLOYEES NAME	DESIGNATION	DEPARTMENT	REMARKS
<b>A - Key Person</b>				
1	Avinash Kumar	Sr .Project Manager	Management	
2	Manoj Kumar	Project Head	Management	
3	Amod Kumar	Project Manager	Management	
4	Kundan Kumar Sharma	Project Manager Str	Management	
<b>B - Planning &amp; Billing</b>				
1	Pradeep Singh	Q S Manager	Planning & Billing	
2	Lovey Johnson	Sr. Engineer	Planning & Billing	
3	Ramesh Dangi	Sr. Engineer	Planning & Billing	
4	Virendra Pal Rathore	Deo	Planning & Billing	
<b>C - Highway</b>				
1	Vinay Kumar	Sr Engineer Highway	Highway	
2	Vikas Kumar Pandey	Sr Engineer Highway	Highway	
3	Ashish Kumar	Sr Engineer Highway	Highway	
4	Bipin Kanojia	Sr Engineer Highway	Highway	
5	Arvind Kumar	Engineer Highway	Highway	
6	Ashish Kumar	Engineer Highway	Highway	
7	Bhanwara Ram	Supervisor	Highway	
<b>D - Structure</b>				
1	Shubham Saini	Dpm Structure	Structure	
2	Yogesh Kumar	Sr Engg Str	Structure	
3	Vikas Kumar Singh	Sr Engg Str	Structure	
4	Rohit Singh	Sr Engg Str	Structure	
5	Uma Shankar	Engg Str	Structure	
6	Muni Lal Singh	Executive Str	Structure	
7	Umesh Singh	Executive Str	Structure	
8	Raj Kumar	Executive Str	Structure	
<b>E - QA/QC</b>				
1	Manoj Kumar Dhakar	Manager QA / QC	QA/QC	
2	Munna Kumar Nirala	Asst. Manager QA / QC	QA/QC	
3	Rajesh Kumar	Qc Engineer	QA/QC	
4	Bijaya Kumar Bhuyan	Sr. Lab Technician	QA/QC	
5	Shailesh Kumar	Sr. Lab Technician	QA/QC	
6	Madan Lal	Sr. Lab Technician	QA/QC	
7	Narendra	Lab Technician	QA/QC	
8	Ladu Singh	Lab Technician	QA/QC	
9	Soumya Ranjan Jena	Lab Technician	QA/QC	
10	Sanjay Kumar	Lab Technician	QA/QC	
11	Pappu Lal Gurjar	Lab Technician	QA/QC	
12	Aman Kumar Sah	Lab Helper	QA/QC	
13	Avdhesh Kumar	Lab Helper	QA/QC	
14	Vrand Kumar Marko	Lab Helper	QA/QC	
15	Bittu Kumar Gupta	Lab Helper	QA/QC	
16	Vimal	Lab Helper	QA/QC	
17	Hari Om Saxena	Lab Helper	QA/QC	
18	Jakir Ansari	Lab Helper	QA/QC	
19	Ravi Singh	Lab Helper	QA/QC	
<b>F - Survey</b>				
1	Pramod Kumar	Sr. Surveyor	Survey	
2	Krishan Kant Verma	Ts Opretor	Survey	
3	Dhanna Ram	Surveyor	Survey	
4	Alok Yadav	Surveyor	Survey	
5	Samir Kumar	Surveyor	Survey	
6	Babu Lal Nayal	Surveyor	Survey	
7	Gopi Ram	Surveyor	Survey	
8	Ram Chandra	Surveyor	Survey	
9	Dilip	Surveyor	Survey	
10	Mahendra Bhinchar	Surveyor	Survey	

# Mobilization of Resources

SR. NO.	EMPLOYEES NAME	DESIGNATION	DEPARTMENT	REMARKS
11	Babu Lal	Surveyor	Survey	
12	Bhala Ram Choudhry	Surveyor	Survey	
13	Sunil	Deo Survey	Survey	
14	Akash Sain	T S Survey Helper	Survey	
15	Vishnu Kumar	T S Survey Helper	Survey	
16	Teekam Singh	T S Survey Helper	Survey	
<b>G -Legal &amp; Liaison</b>				
1	Puneet Kumar Dubey	Agm	Legal & Liaison	
2	Shankar Singh	Officer	Liaison	
<b>H -HR/Admin</b>				
1	Anupam Singh	Manager	Hr/ Admin	
<b>I -Accounts</b>				
1	Gunesh Ram Vishnoi	Accountant	Accounts	
2	Asheesh Singh Bhadouria	Accountant	Accounts	
<b>J - Safety</b>				
1	A K Mohanty	Manager	Safety	
<b>K - Utility Shifting</b>				
1	Gopal Lal Dhabhai	Engineer	Utility Shifting	
<b>L - Store/Purchase</b>				
1	Abhishek Singh	Store Manager	Store	
2	Naresh Panday	Store Incharge	Store	
3	Prithvi Raj Singh	Store Incharge	Store	
4	Aman Tiwari	Executive Store	Store	
5	Ramesh Saran	Procurement	Store	
6	Luna Ram	Deo Store	Store	
7	Dinesh	Store Purchase	Store	
8	Jitendra Choudhary	Store Keeper	Store	
9	Babu Ram	Diesel Supervisor	Store	
10	Vikash	Diesel Billing Store	Store	
11	Babu Ram	Supervisor ( Flyash )	Store	
12	Yuvraj Singh	Supervisor ( Flyash )	Store	
<b>M - Plant &amp; Machinery</b>				
1	Shailendra Kumar Upadhyay	Sr Engg Plant & Machinery	Plant & Machinery	
2	Murlidhar	Hod P&M	Plant & Machinery	
3	Ramesh	Supervisor	Plant & Machinery	
4	Sunil Kumar Patel	Sr Engg P & M	Plant & Machinery	
5	Raj Kumar	Hm Plant Operator	Plant & Machinery	
6	Hari Narayan	Hm Plant Astt Operator	Plant & Machinery	
7	Surjeet	Hm Plant Helper	Plant & Machinery	
8	Banwari Lal Meena	Wmm Plant Operator	Plant & Machinery	
9	Vinay Kumar	Rmc Plant Operetor	Plant & Machinery	
10	Chandan Kumar	Rmc Plant Operetor	Plant & Machinery	
11	Abhishek Kumar	Rmc Plant Operetor	Plant & Machinery	
12	Vishambar Singh	Rmc Plant Operator	Plant & Machinery	
13	Vipin Kumar	Rmc Plant Helper	Plant & Machinery	
14	Suresh Singh	Hm Plant Astt Operator	Plant & Machinery	
15	Bharat Kumar	Plant Supervisor	Plant & Machinery	
16	Gordhan Hadat	Wmm Plant Helper	Plant & Machinery	
17	Vijay Damor	Wmm Plant Helper	Plant & Machinery	
18	Rana Ram	Plant Supervisor	Plant & Machinery	
19	Sukhpal Meena	Plant Supervisor	Plant & Machinery	
20	Sharwan Kumar	Plant Supervisor	Plant & Machinery	
21	Chena Ram	Plant Supervisor	Plant & Machinery	
22	Brijesh Kumar	Dbm Paver Operator	Plant & Machinery	
23	Pankaj Kumar	Dbm Paver Helper	Plant & Machinery	
24	Ragvendra	Excavator Operator	Plant & Machinery	
25	Sonu Yadav	Excavator Operator	Plant & Machinery	
26	Shatrudhan Sah	Excavator Operator	Plant & Machinery	

# Mobilization of Resources

SR. NO.	EMPLOYEES NAME	DESIGNATION	DEPARTMENT	REMARKS
27	Balveer Khangar	Excavator Operator	Plant & Machinery	
28	Suneel Gupta	Excavator Operator	Plant & Machinery	
29	Ram Shankar Verma	Excavator Operator	Plant & Machinery	
30	Suresh Kumar Prajapati	Excavator Operator	Plant & Machinery	
31	Ajeet Yadav	Excavator Operator	Plant & Machinery	
32	Bharat Kumar Singh	Excavator Operator	Plant & Machinery	
33	Pramod Pandey	Excavator Operator	Plant & Machinery	
34	Niranjan Prakash	Excavator Operator	Plant & Machinery	
35	Amod Kumar Singh	Excavator Operator	Plant & Machinery	
36	Raj Lal	Excavator Operator	Plant & Machinery	
37	Balvant Yadav	Excavator Operator	Plant & Machinery	
38	Balram Janghela	Excavator Operator	Plant & Machinery	
39	Brajendra	Excavator Operator	Plant & Machinery	
40	Sachin Tomar	Excavator Operator	Plant & Machinery	
41	Ravindra	Excavator Operator	Plant & Machinery	
42	Harish	Excavator Helper	Plant & Machinery	
43	Kalyan Singh	Excavator Helper	Plant & Machinery	
44	Jay Pal Gurjar	Excavator Helper	Plant & Machinery	
45	Ankit Verma	Excavator Helper	Plant & Machinery	
46	Abhishek Verma	Excavator Helper	Plant & Machinery	
47	Sunil Gurjar	Excavator Helper	Plant & Machinery	
48	Lala Ram	Grader Operator	Plant & Machinery	
49	Mala Ram	Grader Operator	Plant & Machinery	
50	Balveer Singh	Grader Operator	Plant & Machinery	
51	Bhanwar Lal	Grader Operator	Plant & Machinery	
52	Deepak Singh	Grader Operator	Plant & Machinery	
53	Arvind Sah	Grader Operator	Plant & Machinery	
54	Jagdish	Grader Operator	Plant & Machinery	
55	Abhay Pratap Singh	Grader Operator	Plant & Machinery	
56	Gurcharan Singh	Grader Operator	Plant & Machinery	
57	Rahul Kumar	Grader Operator	Plant & Machinery	
58	Mahesh Prasad Patel	Grader Operator	Plant & Machinery	
59	Dipesh Kumar	Grader Operator	Plant & Machinery	
60	Ajay Kumar	Grader Helper	Plant & Machinery	
61	Mukesh Kumar	Grader Helper	Plant & Machinery	
62	Shakir Hussain	Jcb Operator	Plant & Machinery	
63	Vinod	Jcb Operator	Plant & Machinery	
64	Gunjan Kumar	Jcb Operator	Plant & Machinery	
65	Suraj Kumar	Jcb Operator	Plant & Machinery	
66	Dinesh Verma	Jcb Operator	Plant & Machinery	
67	Gopal Pandit	Jcb Operator	Plant & Machinery	
68	Sunil Kumar	Roller Operator	Plant & Machinery	
69	Raghvendra Prasad Mishra	Roller Operator	Plant & Machinery	
70	Vishal Singh	Roller Operator	Plant & Machinery	
71	Ram Karan	Roller Operator	Plant & Machinery	
72	Hanuman Singh	Roller Operator	Plant & Machinery	
73	Ravi Pal	Roller Operator	Plant & Machinery	
74	Shabbir Ansari	Roller Operator	Plant & Machinery	
75	Aakash Kumar	Roller Operator	Plant & Machinery	
76	Indal Sharma	Roller Operator	Plant & Machinery	
77	Shubham Singh	Roller Operator	Plant & Machinery	
78	Rajnish Sahu	Roller Operator	Plant & Machinery	
79	Vipan Kumar	Dozer Operator	Plant & Machinery	
80	Vinay Kumar	Dozer Operator	Plant & Machinery	
81	Manish Kumar	Dozer Operator	Plant & Machinery	
82	Raj Kumar Sharma	Dozer Operator	Plant & Machinery	
83	Dinesh Ninama	Loader Operator	Plant & Machinery	
84	Moti Singh	Loader Operator	Plant & Machinery	
85	Jay Singh	Loader Operator	Plant & Machinery	

# Mobilization of Resources

SR. NO.	EMPLOYEES NAME	DESIGNATION	DEPARTMENT	REMARKS
86	Puran Singh	Loader Operator	Plant & Machinery	
87	Amit Damor	Loader Helper	Plant & Machinery	
88	Paras Kumar Singh	Concrete Pump Operator	Plant & Machinery	
89	Animesh Kumar	Concrete Pump Operator	Plant & Machinery	
90	Madan Lal	Supervisor	Plant & Machinery	
91	Mahaveer Poonia	Plant Supervisor	Plant & Machinery	
92	Ajit Singh	Lmv Driver	Plant & Machinery	
93	Saddam	Lmv Driver	Plant & Machinery	
94	Jagdish Prasad	Lmv Driver	Plant & Machinery	
95	Ravi Singh	Lmv Driver	Plant & Machinery	
96	Yogesh Singh	Lmv Driver	Plant & Machinery	
97	Md Hasib Khan	Lmv Driver	Plant & Machinery	
98	Hadmat Singh	Lmv Driver	Plant & Machinery	
99	Hari Om Dholi	Lmv Driver	Plant & Machinery	
100	Ram Dev Singh	Lmv Driver	Plant & Machinery	
101	Rajiv Kumar	Lmv Driver	Plant & Machinery	
102	Moola Ram	Hmv Driver	Plant & Machinery	
103	Jabbar Khan	Hmv Driver	Plant & Machinery	
104	Devendra Singh	Hmv Driver	Plant & Machinery	
105	Babu Lal Gurjar	Hmv Driver	Plant & Machinery	
106	Mahadev Meena	Hmv Driver	Plant & Machinery	
107	Mukesh Meena	Hmv Driver	Plant & Machinery	
108	Rajendra Gurjar	Hmv Driver	Plant & Machinery	
109	Shri Ram	Hmv Driver	Plant & Machinery	
110	Bhanwar Lal	Hmv Driver	Plant & Machinery	
111	Hem Raj	Hmv Driver	Plant & Machinery	
112	Sodan Gurjar	Hmv Driver	Plant & Machinery	
113	Bihari Lal	Hmv Driver	Plant & Machinery	
114	Gopi Lal Regar	Hmv Driver	Plant & Machinery	
115	Brijesh Yadav	Hmv Driver	Plant & Machinery	
116	Irfan Khan	Hmv Driver	Plant & Machinery	
117	Harish Kumar	Hmv Driver	Plant & Machinery	
118	Surendra Prasad	Hmv Driver	Plant & Machinery	
119	Ram Lakhan Nagar	Hmv Driver	Plant & Machinery	
120	Naresh Kumar Mali	Hmv Driver	Plant & Machinery	
121	Bhakar Ram	Hmv Driver	Plant & Machinery	
122	Jasa Ram	Hmv Driver	Plant & Machinery	
123	Newa Gurjar	Hmv Driver	Plant & Machinery	
124	Kalu Singh	Hmv Driver	Plant & Machinery	
125	Kuldip Singh	Hmv Driver	Plant & Machinery	
126	Rahul Yadav	Hmv Driver	Plant & Machinery	
127	Md Maruf	Hmv Driver	Plant & Machinery	
128	Md Meraj	Hmv Driver	Plant & Machinery	
129	Toran Singh	Hmv Driver	Plant & Machinery	
130	Udham Singh	Hmv Driver	Plant & Machinery	
131	Ram Nath Singh	Hmv Driver	Plant & Machinery	
132	Anil Dhurve	Hmv Driver	Plant & Machinery	
133	Usman Khan	Hmv Driver	Plant & Machinery	
134	Kurwan Ali	Hmv Driver	Plant & Machinery	
135	Aadil Khan	Hmv Driver	Plant & Machinery	
136	Salman Khan	Hmv Driver	Plant & Machinery	
137	Nazim Khan	Hmv Driver	Plant & Machinery	
138	Mukesh Meena	Hmv Driver	Plant & Machinery	
139	Nand Lal Gurjar	Hmv Driver	Plant & Machinery	
140	Kanhaiya Lal	Hmv Driver	Plant & Machinery	
141	Shree Nivas	Hmv Driver	Plant & Machinery	
142	Lakhan	Hmv Driver	Plant & Machinery	
143	Dharmpal	Hmv Driver	Plant & Machinery	
144	Harvindar Singh	Hmv Driver	Plant & Machinery	

# Mobilization of Resources

SR. NO.	EMPLOYEES NAME	DESIGNATION	DEPARTMENT	REMARKS
145	Dinesh Kumar	Hmv Driver	Plant & Machinery	
146	Jogendar	Hmv Driver	Plant & Machinery	
147	Uma Shankar	Hmv Driver	Plant & Machinery	
148	Gajab Singh	Hmv Driver	Plant & Machinery	
149	Vikram Singh Tomar	Hmv Driver	Plant & Machinery	
150	Beerendra Rajpali	Hmv Driver	Plant & Machinery	
151	Dhanraj Regar	Hmv Driver	Plant & Machinery	
152	Kailash Chandr Gurjar	Hmv Driver	Plant & Machinery	
153	Jay Ram	Hmv Driver	Plant & Machinery	
154	Arjun Ram	Hmv Driver	Plant & Machinery	
155	Shafi Ahmad	Hmv Driver	Plant & Machinery	
156	Pawan Kumar	Hmv Driver	Plant & Machinery	
157	Ashok Kumar	Hmv Driver	Plant & Machinery	
158	Shiv Mangal	Hmv Driver	Plant & Machinery	
159	Sadanand Yadav	Hmv Driver	Plant & Machinery	
160	Anwar Ali	Hmv Driver	Plant & Machinery	
161	Md . Asgar	Hmv Driver	Plant & Machinery	
162	Md . Salim	Hmv Driver	Plant & Machinery	
163	Bhalla Ram	Hmv Driver	Plant & Machinery	
164	Ramesh Nayak	Hmv Driver	Plant & Machinery	
165	Vineet Singh	Hmv Driver	Plant & Machinery	
166	Amar Singh Choudhary	Hmv Driver	Plant & Machinery	
167	Jitender Pooniya	Hmv Driver	Plant & Machinery	
168	Gorkh Ram	Hmv Driver	Plant & Machinery	
169	Raja Ram Jat	Hmv Driver	Plant & Machinery	
170	Sawai Ram	Hmv Driver	Plant & Machinery	
171	Shankar Lal Rebari	Hmv Driver	Plant & Machinery	
172	Brijesh Kumar Yadav	Tm Operator	Plant & Machinery	
173	Peeru Lal Meena	Tm Operator	Plant & Machinery	
174	Sant Kumar Meena	Tm Operator	Plant & Machinery	
175	Arjun Singh	Tm Operator	Plant & Machinery	
176	Rajesh Yadav	Tm Operator	Plant & Machinery	
177	Lokesh Kumar Meena	Tm Operator	Plant & Machinery	
178	Anil Kumar Meena	Tm Operator	Plant & Machinery	
179	Peeru Lal Meena	Tm Operator	Plant & Machinery	
180	Kailash Chand Meena	Tm Operator	Plant & Machinery	
181	Udayvir Singh	Tm Operator	Plant & Machinery	
182	Satendra Singh	Tm Operator	Plant & Machinery	
183	Bhairu Lal Meena	Tm Operator	Plant & Machinery	
184	Himmat Singh Meena	Tm Operator	Plant & Machinery	
185	Dinesh Kumar Meena	Tm Operator	Plant & Machinery	
186	Mahesh Pal	Tm Helper	Plant & Machinery	
187	Abhishek	Tm Helper	Plant & Machinery	
188	Kismat Kumar Meena	Tm Helper	Plant & Machinery	
189	Heera Lal Meena	Tm Helper	Plant & Machinery	
190	Bhagawan Singh Rajput	Tm Helper	Plant & Machinery	
191	Shankar Lal Meena	Tm Helper	Plant & Machinery	
192	Parveen Singh	Crane Operator	Plant & Machinery	
193	Harpreet Singh	Crane Helper	Plant & Machinery	
194	Shail	Crane Helper	Plant & Machinery	
195	Ritik Pathania	Crane Helper	Plant & Machinery	
196	Manish Shukla	Boom Placer Operator	Plant & Machinery	
197	Vikas Kumar	Boom Placer Helper	Plant & Machinery	
198	Akash Parihar	Boom Placer Helper	Plant & Machinery	
199	Nurul Haq Islam	Welder	Plant & Machinery	
200	Sabuddin	Welder	Plant & Machinery	
201	Boduram Gurjar	Welder	Plant & Machinery	
202	Sunil Kumar	Astt Mechanic	Plant & Machinery	
203	Ayub Khan	Mechanic	Plant & Machinery	

# Mobilization of Resources

SR. NO.	EMPLOYEES NAME	DESIGNATION	DEPARTMENT	REMARKS
204	Akash Kumar Vishwakarma	Mechanic	Plant & Machinery	
205	Hem Kumar	Mechanic	Plant & Machinery	
206	Sada Vraksha Vishwakarma	Mechanic	Plant & Machinery	
207	Ajay Pratap	Astt Mechanic	Plant & Machinery	
208	Abhay Pratap	Astt Mechanic	Plant & Machinery	
209	Bultan Kumar	Mechanic Helper	Plant & Machinery	
210	Md Asalam	Grease Man	Plant & Machinery	
211	Abdul Rab	Kabani Fitter	Plant & Machinery	
212	Chaman	Tyre Fitter	Plant & Machinery	
213	Gourabh	Tyre Fitter Helper	Plant & Machinery	
214	Gulab Chandra	Electrician	Plant & Machinery	
215	Thakur Singh	Auto Electrician	Plant & Machinery	
216	Shrilal Prajapati	Hydra Operator	Plant & Machinery	
217	Nikku Kumar	Hydra Operator	Plant & Machinery	
218	Sunil Kumar Meena	Hydra Operator	Plant & Machinery	
219	Pramod Korva	Hydra Operator	Plant & Machinery	

# Permission & Approvals

## STATUS OF PERMISSION AND APPROVALS AS PER SCHEDULE -E

Sr. No.		Actual Status
1	<b>State Government Permits (Quarrying Permits)</b>	
i	Permission of the State Government for Extraction of boulder from quarry	Obtained
ii	Permission of Village Panchayat & Pollution Control Board for installation of crusher	Obtained
iii	Permission of the State Government for drawing water from river/reservoir	Obtained
iv	Any other permits or clearances required under Applicable Laws	Obtained

# Status of Design & Drawing

A- HIGHWAY							
SR. NO.	DESCRIPTION	TOTAL	SUBMITTED	BALANCE TO SUBMIT	APPROVED	BALANCE TO APPROVED	REMARKS
		(KM.)	(KM.)	(KM.)	(KM.)	(KM.)	
1	Plan & Profile of Main Carriageway (Km. 102.000 to Km. 142.357)	40.357	40.357	0	40.357	0	
2	Plan & Profile of Service/Slip Road (Km. 102.000 to Km. 142.357)	17.915	17.915	0	0	17.915	
3	Plan & Profile of line drain (Km. 102.000 to Km. 142.357)	17.915	17.915	0	17.915	0	
B- STRUCTURES							
SR. NO.	DESCRIPTION	TOTAL	SUBMITTED	BALANCE TO SUBMIT	APPROVED	BALANCE TO APPROVED	REMARKS
		(NOS)	(NOS)	(NOS)	(NOS)	(NOS)	
1	Pipe Culvert	27	27	0	21	6	
2	Box Culvert	17	15	2	6	11	
3	Minor Bridge	12	10	2	1	11	
4	LVUP	6	6	0	0	6	
5	VUP	15	13	2	4	11	
6	Major Bridge	1	1	0	0	1	
<b>TOTAL</b>		<b>78</b>	<b>72</b>	<b>6</b>	<b>32</b>	<b>46</b>	

**Project: 4-laning of Shahganj bypass end to Badi (Package-IV) of NH-146B from design km 102.000 to design km 142.357 (Design Length 40.357 km) under NH(O) in the State of Madhya Pradesh on Hybrid Annuity Mode**  
**Physical Progress Report Up to September-2025**

Item	Stage for Measurement of Physical Progress	Unit	Qty.	Weightage in percentage to the Contract Price	Total Upto Date		
					Completed Qty.	Physical Progress % Age	
<b>Road works including Culverts, Minor Bridges, Underpass, Overpass Approaches to ROB/RUB/ Major Bridges/Structures (But excluding Service Road)</b>	<b>A- Widening and Strengthening of Existing Road</b>						
	(1) Earthwork up to top of the Subgrade	Km.	69.494	3.65%	11.520	0.606%	
	(2) Granular Work (Sub-Base, Shoulders)						
	(a) CTSB / GSB	Km.	69.494	4.20%	5.790	0.350%	
	(b) CTB	Km.	69.494	1.80%	-	0.000%	
	(c) AIL/WMM	Km.	69.494	1.68%	-	0.000%	
	(3) Shoulder/Median	Km.	41.550	0.09%			
	<b>(4) Bituminous works</b>						
	(c) DBM	Km.	69.494	6.12%	-	0.000%	
	(d) BC	Km.	71.100	4.35%	-	0.000%	
	<b>(5) Rigid Pavement</b>						
	<b>B- New realignment/Bypass</b>						
	(1) Earthwork up to top of the Subgrade	Km.	9.614	0.59%	4.310	0.263%	
	(2) Granular Work (Sub-Base, Shoulders)						
	(a) CTSB/ GSB Realignment	Km.	9.614	0.53%	-	0.000%	
	(b) CTB Realignment	Km.	9.614	0.26%	-	0.000%	
	(c) AIL Realignment	Km.	9.614	0.24%	-	0.000%	
	(3) Shoulder	Km.	3.334	0.01%			
	<b>(4) Bituminous works</b>						
	(c) DBM	Km.	9.614	0.82%	-	0.000%	
	(d) BC	Km.	9.614	0.60%	-	0.000%	
	<b>(5) Rigid Pavement</b>						
	<b>C- New Culverts, Minor Bridges, Underpasses, Overpasses on existing road, realignments, bypasses:</b>						
	<b>1) Box &amp; Pipe Culverts</b>			44.000	1.54%	20.000	0.698%
	<b>(2) Minor Bridges</b>						
	a) Foundation	Nos.	36.000	1.45%	12.000	0.482%	
	b) Sub-structure	Nos.	36.000	1.25%	11.000	0.381%	
	c) Super-structure (including crash barriers etc complete)	Nos.	36.000	0.96%	10.000	0.266%	
	<b>(3) Cattle/Pedestrian Underpass</b>						
	a) Foundation	Nos.					
	b) Sub-structure	Nos.					
	c) Super-structure (including crash barriers etc complete)	Nos.					
	<b>(4) Pedestrian Overpasses</b>						
	a) Foundation	Nos.					
	b) Sub-structure	Nos.					
	c) Super-structure (including crash barriers etc complete)	Nos.					
	<b>(5) Grade Separated Structures</b>						
	<b>(A) Underpass (VUP/LVUP)</b>						
	a) Foundation	Nos.	63.000	1.81%	16.000	0.460%	
	b) Sub-structure	Nos.	93.000	1.42%	16.000	0.244%	
c) Super-structure (including crash barriers etc complete)	Nos.	55.000	2.62%	-	0.000%		
<b>(B) Overpass</b>							
a) Foundation	Nos.						
b) Sub-structure	Nos.						
c) Super-structure (including crash barriers etc complete)	Nos.						
<b>(C) Flyover</b>							
a) Foundation	Nos.						
b) Sub-structure	Nos.						
c) Super-structure (including crash barriers etc complete)	Nos.						
<b>(D) Foot Over bridge</b>							
<b>(D) Foot Over bridge</b>	Nos.						
<b>Major Bridge works and ROB/RUB</b>	<b>A- Widening and Repair of Major Bridges</b>						
	(1) Foundation	Nos.					
	(2) Sub-Structure	Nos.					
	(3) Super-structure (including crash barriers etc complete)	Nos.					
	<b>B- Widening and Repair of</b>						
	<b>(a) ROB</b>						
	(1) Foundation	Nos.					
	(2) Sub-Structure	Nos.					
	(3) Super-structure (including crash barriers etc complete)	Nos.					
	<b>(b) RUB</b>						
	(1) Foundation	Nos.					
	(2) Sub-Structure	Nos.					
	(3) Super-structure (including crash barriers etc complete)	Nos.					
	<b>C- New Major Bridges</b>						

Item	Stage for Measurement of Physical Progress	Unit	Qty.	Weightage in percentage to the Contract Price	Total Upto Date	
					Completed Qty.	Physical Progress % Age
	(1) Foundation					
	(a) Open Foundation	Nos.	10.000	0.14%	7.000	0.096%
	(b) Pile Foundation/Well Foundation	Nos.				
	(2) Sub-structure	Nos.	10.000	0.24%	5.000	0.122%
	(3) Super-structure (including crash barriers etc complete)	Nos.				
	(a) On Casting	Nos.	32.000	0.25%	8.000	0.063%
	(b) On Erection	Nos.	32.000	0.38%	-	0.000%
	<b>D- New Rail Road Bridges</b>					
	<b>(a) ROB</b>					
	(1) Foundation	Nos.				
	(2) Sub-structure	Nos.				
	(3) Super-structure (including crash barriers etc complete)	Nos.				
	<b>(b) RUB</b>					
	(1) Foundation	Nos.				
	(2) Sub-structure	Nos.				
	(3) Super-structure (including crash barriers etc complete)	Nos.				
<b>Structures (Elevated Section, Reinforced earth)</b>	(1) Foundation	Nos.				
	(2) Sub-structure	Nos.				
	(3) Super-structure (including crash barriers etc complete)	Nos.				
	(4) Reinforced Earth Wall (Including approaches of ROB, Underpasses, Overpass, Flyover etc)	Sqm				
	(a) On Casting	Sqm	134050	1.71%	55,697.000	0.710%
	(b) On Erection	Sqm	134050	32.45%	6,981.450	1.690%
<b>Electrical and Public Health Utilities</b>	(a) EHT line	Km				
	(b) EHT crossing	No				
	(c) HT/LT lines (including Transformers if any)	Km	118.950	3.66%	10.00	0.308%
	(d) HT/LT crossings	No	124.000	1.28%	-	0.000%
	(e) Water pipeline	Km	7.600	0.67%	-	0.000%
	(f) Water pipeline crossings	No				
	(g) Sewage line	Km				
	(h) Sewage line crossings	No				
<b>Other works</b>	<b>(i) Service Roads/Slip Roads</b>					
	(1) Earth Work Up to BC Top	Km.	35.830	5.91%	-	0.000%
	<b>(ii) Toll Plaza</b>	Nos.	1.000	2.25%	-	0.000%
	<b>(iii) Road Side Drains</b>	Km.	35.830	5.16%	5.85	0.843%
	<b>(iv) Road signs, markings, Km. Stones, Safety Devices etc.</b>					
	(a) Road signs, markings, Km. Stones, etc.	Km.	40.357	1.73%	-	0.000%
	(f) Concrete Crash Barrier/W-beam Crash Barrier in Road	Km.	28.770	2.96%	-	0.000%
	<b>(v) Project Facilities</b>					
	(a) Bus Bays/ Shelters	Nos.				
	(b) Truck Lay Bys	Nos.				
	(c) Rest Areas	Nos.				
	(vi) Highway Lighting	Nos.				
	<b>(vii) Road side plantation</b>	Km.	39.554	0.18%	-	0.000%
	<b>(viii) Protection works</b>					
	a) Boulders pitching on slopes	Km.				
	b) Toe/Retaining wall	Km.	1.928	0.35%	-	0.000%
	<b>(ix) Tunnel</b>	Km.				
	a) Excavation	Meter				
	b) Construction of support system including rock bolting, lining etc.	Meter				
	c) On Completion of Tunnel	Meter				
	<b>(x) Miscellaneous</b>					
	(a) Rain Water Harvesting (At Every 2 Km within ROW)	Nos.	20.000	0.07%	-	0.000%
	(b) Street Lightning	Nos.	1156.714	0.90%	-	0.000%
	(c) Boundary wall/ Fencing Works	km	79.108	2.51%	-	0.000%
	(d) Culverts on Cross Road	Nos.	45.000	0.46%	-	0.000%
	(e) Utility Pipe 600 Dia	Nos.	80.000	0.12%	12.000	0.018%
	(f) Bus Shelter	Nos.	21.000	0.05%	-	0.000%
	(g) Junctions	Nos.	46.000	0.55%	-	0.000%
	(h) Unlined Drain	km	43.278	0.05%	-	0.000%
				<b>100.00%</b>		<b>7.60%</b>



Project Starting Ch. 102000  
 Project Ending Ch. 142357  
 Ch. Interval 100

Date  
 30-09-2025

LHS_RCC Drain		LHS	Drain																																																																																																																																																																																																																																																																																																																																																																																																																																																																																																																																					
LHS-Service Road Const.		LHS	SR																																																																																																																																																																																																																																																																																																																																																																																																																																																																																																																																					
SR Workfront Available		LHS	SR																																																																																																																																																																																																																																																																																																																																																																																																																																																																																																																																					
LHS-MCW Construction	PQC	LHS	MCW																																																																																																																																																																																																																																																																																																																																																																																																																																																																																																																																					
	DLC	LHS	MCW																																																																																																																																																																																																																																																																																																																																																																																																																																																																																																																																					
	BC	LHS	MCW																																																																																																																																																																																																																																																																																																																																																																																																																																																																																																																																					
	DBM	LHS	MCW																																																																																																																																																																																																																																																																																																																																																																																																																																																																																																																																					
	GSB	LHS	MCW																																																																																																																																																																																																																																																																																																																																																																																																																																																																																																																																					
	Sub-Grade	LHS	MCW																																																																																																																																																																																																																																																																																																																																																																																																																																																																																																																																					
	Emb. Top	LHS	MCW																																																																																																																																																																																																																																																																																																																																																																																																																																																																																																																																					
	C&G	LHS	MCW																																																																																																																																																																																																																																																																																																																																																																																																																																																																																																																																					
LHS-MCW Workfront		LHS	MCW																																																																																																																																																																																																																																																																																																																																																																																																																																																																																																																																					
Other Hindrances		LHS	MCW																																																																																																																																																																																																																																																																																																																																																																																																																																																																																																																																					
Workfront Available		LHS	MCW																																																																																																																																																																																																																																																																																																																																																																																																																																																																																																																																					
Chainage				110+800	110+900	111+000	111+100	111+200	111+300	111+400	111+500	111+600	111+700	111+800	111+900	112+000	112+100	112+200	112+300	112+400	112+500	112+600	112+700	112+800	112+900	113+000	113+100	113+200	113+300	113+400	113+500	113+600	113+700	113+800	113+900	114+000	114+100	114+200	114+300	114+400	114+500	114+600	114+700	114+800	114+900	115+000	115+100	115+200	115+300	115+400	115+500	115+600	115+700	115+800	115+900	116+000	116+100	116+200	116+300	116+400	116+500	116+600	116+700	116+800	116+900	117+000	117+100	117+200	117+300	117+400	117+500	117+600	117+700	117+800	117+900	118+000	118+100	118+200	118+300	118+400	118+500	118+600	118+700	118+800	118+900	119+000	119+100	119+200	119+300	119+400	119+500																																																																																																																																																																																																																																																																																																																																																																																																																																													
RHS-MCW Workfront		RHS	MCW																																																																																																																																																																																																																																																																																																																																																																																																																																																																																																																																					
Other Hindrances		RHS	MCW																																																																																																																																																																																																																																																																																																																																																																																																																																																																																																																																					
RHS-MCW Construction	C&G	RHS	MCW																																																																																																																																																																																																																																																																																																																																																																																																																																																																																																																																					
	Emb. Top	RHS	MCW																																																																																																																																																																																																																																																																																																																																																																																																																																																																																																																																					
	Sub-Grade	RHS	MCW																																																																																																																																																																																																																																																																																																																																																																																																																																																																																																																																					
	GSB	RHS	MCW																																																																																																																																																																																																																																																																																																																																																																																																																																																																																																																																					
	DBM	RHS	MCW																																																																																																																																																																																																																																																																																																																																																																																																																																																																																																																																					
	BC	RHS	MCW																																																																																																																																																																																																																																																																																																																																																																																																																																																																																																																																					
	DLC	RHS	MCW																																																																																																																																																																																																																																																																																																																																																																																																																																																																																																																																					
	PQC	RHS	MCW																																																																																																																																																																																																																																																																																																																																																																																																																																																																																																																																					
SR Workfront Available		RHS	SR																																																																																																																																																																																																																																																																																																																																																																																																																																																																																																																																					
RHS-Service Road Const.		RHS	SR																																																																																																																																																																																																																																																																																																																																																																																																																																																																																																																																					
RHS_RCC Drain		RHS	Drain																																																																																																																																																																																																																																																																																																																																																																																																																																																																																																																																					
RE Wall		BHS																																																																																																																																																																																																																																																																																																																																																																																																																																																																																																																																						
Status of Structures																																																																																																																																																																																																																																																																																																																																																																																																																																																																																																																																								
Structure Chainage				111+790																																															112+710																																															113+575																																															114+100																																															114+365																																															114+870																																															115+050																																															115+675																																															116+440																																															118+420																																															118+690																																														
Types of Structures				HPC																																															VUP																																															VUP																																															HPC																																															MNB																																															Box Culvert																																															HPC																																															LVUP																																															MNB																																															Box Culvert																																															VUP																																														

Legends	
Not Started (Blank)	
Work In Progress(WIP)	
Completed(COM)	
Workfront Available (WA)	
Workfront Unavailable (WUA)	



Project Starting Ch. 102000  
 Project Ending Ch. 142357  
 Ch. Interval 100 Date  
30-09-2025

LHS_RCC Drain		LHS	Drain
LHS-Service Road Const.		LHS	SR
SR Workfront Available		LHS	SR
LHS-MCW Construction	PQC	LHS	MCW
	DLC	LHS	MCW
	BC	LHS	MCW
	DBM	LHS	MCW
	GSB	LHS	MCW
	Sub-Grade	LHS	MCW
	Emb. Top	LHS	MCW
	C&G	LHS	MCW
LHS-MCW Workfront	Other Hindrances	LHS	MCW
	Workfront Available	LHS	MCW
Chainage			128+400 128+500 128+600 128+700 128+800 128+900 129+000 129+100 129+200 129+300 129+400 129+500 129+600 129+700 129+800 129+900 130+000 130+100 130+200 130+300 130+400 130+500 130+600 130+700 130+800 130+900 131+000 131+100 131+200 131+300 131+400 131+500 131+600 131+700 131+800 131+900 132+000 132+100 132+200 132+300 132+400 132+500 132+600 132+700 132+800 132+900 133+000 133+100 133+200 133+300 133+400 133+500 133+600 133+700 133+800 133+900 134+000 134+100 134+200 134+300 134+400 134+500 134+600 134+700 134+800 134+900 135+000 135+100 135+200 135+300 135+400 135+500 135+600 135+700 135+800 135+900 136+000 136+100 136+200 136+300 136+400 136+500 136+600 136+700 136+800 136+900 137+000 137+100
RHS-MCW Workfront	Workfront Available	RHS	MCW
	Other Hindrances	RHS	MCW
RHS-MCW Construction	C&G	RHS	MCW
	Emb. Top	RHS	MCW
	Sub-Grade	RHS	MCW
	GSB	RHS	MCW
	DBM	RHS	MCW
	BC	RHS	MCW
	DLC	RHS	MCW
	PQC	RHS	MCW
SR Workfront Available		RHS	SR
RHS-Service Road Const.		RHS	SR
RHS_RCC Drain		RHS	Drain
RE Wall		BHS	
Status of Structures			
Structure Chainage			
Types of Structures			

Legends	
Not Started (Blank)	
Work In Progress(WIP)	
Completed(COM)	
Workfront Available (WA)	
Workfront Unavailable (WUA)	



## SAFETY & HEALTH

- ➔ Safety Officers along with supporting staff are deployed at Site to take care of safety aspects and Traffic Management.
- ➔ Safety & Traffic Management Systems implemented at locations wherever work is in progress as per the Safety & Traffic Management plan submitted to your office vide our letter no. SBHPL/NHAI/FY24-25/63 dated 05.04.2025. Further, utmost care will be taken for safety of the work force as well as road users while carrying out the various activities.
- ➔ All culverts under construction are barricaded, with hard board, delineators & Safety tape as applicable.
- ➔ Road work under execution are barricaded with sand bags by sticking radium tape along the stretch for effective night vision.
- ➔ Identification of activity based PPE requirement and provided to all workman and enforced to use it, like Nose Mask, Spectacles, Gum boots, Hard Hat, fluorescent jackets, safety belts, safety shoes etc.
- ➔ Provision of water tankers for sprinkling water to dust control in/along works on the highway, access road, plants site and sprinkling system at crusher sites etc.
- ➔ All VUP's & Minor Bridges under construction is barricaded with hard board, Warning boards & Sign board, delineators & Safety tape, as applicable.
- ➔ Over all housekeeping in the camp and plant site.
- ➔ The awareness/training program on HSE for workers is being conducted periodically like fire safety/flagmen/safe driving training etc. and tool box talk conducted at site on regular basis by the HSE team.
- ➔ All the structural work/form work/scaffolding taken up as per approved drawing and methodology will be assured by concerned Engineers.
- ➔ First Aid Box in available at Camp office & plants.
- ➔ All speed breakers have been painted with white strip for night visibility.
- ➔ Bushes are removed from the shoulders side to enhance better visibility wherever is required.
- ➔ Safety Officer : Mr. , Akshay Mohanty
- ➔ Safety Supervisor for Site.
- ➔ Use of Safety Jackets & Helmets will be in Routine process of Execution.
- ➔ Contractor will conduct/celebrate special safety week. The follwing activity will be carried out during road safety days.
- ★ Road safety awareness programme at important location like Gram Panchayat within 2 Kms from Project Highway, all major junctions/Intersections, Bus Stand and Urban Areas, using mobile van with audio and visual effect will be conducted regularly.

## SAFETY & HEALTH

- ★ Distribution of pamphlets etc to road users, all Police Station, Petrol Pumps, School and at Location where awareness programme will be conducted.
- ★ Display of "Flexi Road Sinages" banner at various prominent locations.
- ★ In house training & awareness programme at our camp for all Drivers and Operators.
- ★ Distribution of Book on Road Safety Signage & Signs (Issued by MoRTH),and Manual of Roads Safety Education to District Administrative/Police Officers.
- ➔ Vents of All Existing and Newly Constructed Structures will be opened.

## EXISTING ROAD MAINTENANCE



Routine Maintenance of Project Highway is being carried out on Regular intervals so as to fulfil the requirement of Agreement.

## QUALITY

EPC Contractor has established a full fledged laboratory within the site office premises at the Following Locations:-

1. Base Camp-1 @ Km. 107+500 RHS

All required tests related to execution of various activities in Highway & Structure works as per frequencies and requirements of the IRC codal provisions are being carried out. In-house Team of EPC Contractor is conducting the tests independently to ensure quality.

The details of tests carried out are given in **Annexure-1**.

Weather report for the month is given in **Annexure-2**.

**CONSTRUCTION OF 4-LANING OF SHAHGANJ BYPASS END TO BADI (PACKAGE-IV) OF NH-146B FROM DESIGN KM 102+000 TO DESIGN KM142+357(DESIGN LENGTH 40.357 KM) UNDER NH(O) IN THE STATE OF MADHYA PRADESH ON HYBRID ANNUITY MODE**



CLIENT : NATIONAL HIGHWAYS AUTHORITY OF INDIA  
 CONCESSIONAIRE : SHAHGANJ BADI HIGHWAY PRIVATE LIMITED  
 INDEPENDENT ENGINEER : SAPTAGON ASIA PVT. LTD.  
 EPC CONTRACTOR : MCC INFRA TECH PRIVATE LIMITED

**MONTHLY PROGRESS REPORT FOR THE MONTH OF SEPTEMBER 2025 PACKAGE-IV**

SL NO	DESCRIPTION	TYPE OF TEST	FREQUENCY OF TESTING	NO.OF TEST CONDUCTED TILL PREVIOUS MONTH	TOTAL TEST CONDUCTED FOR THIS MONTH	NO.OF TEST CONDUCTED FOR THE MONTH		NO.OF TEST CONDUCTED UPTO MONTH	TEST WITNESSED BY IE/NHAI FOR THE MONTH	REMARKS
						PASS	FAIL			
1	OGL	Gradation	1 Tests/ 250 Rm	117				117		
		Proctor	1 Tests/ 250 Rm	117				117		
		Atterberg Limits	1 Tests/ 250 Rm	117				117		
		Free Swell Index	1 Tests/ 250 Rm	117				117		
		CBR	As required	10				10		
		Field Density	10 Density measurement/ 3000 m <sup>2</sup>	1536				1536		
2	BORROW AREA MATERIAL	Gradation	2 Tests/ 3000 m <sup>3</sup>	506	10	10		516	2	
		Proctor	2 Tests/ 3000 m <sup>3</sup>	506	10	10		516	2	
		Atterberg Limits	2 Tests/ 3000 m <sup>3</sup>	506	10	10		516	2	
		Free Swell Index	2 Tests/ 3000 m <sup>3</sup>	506	10	10		516	2	
		CBR	1 Test/3000 m <sup>3</sup>	251				251		
3	FIELD DRY DENSITY (FDD) TEST	Embankment Layer	10 Density measurement/ 3000 m <sup>2</sup>	9524	768	766	2	10292	72	
		Subgrade layer	10 Density measurement/ 2000 m <sup>2</sup>	2611	52	52		2663		
		Shoulder	10 Density measurement/ 2000 m <sup>2</sup>							
4	GRANULAR SUBBASE [ G.S.B ]	Gradation	1 Test/ 400 m <sup>3</sup>	78	2	2		80	1	
		Atterberg's Limits	1 Test/ 400 m <sup>3</sup>	67	2	2		69	1	
		Proctor	As required	2				2		
		CBR	As required	2				2		
		AIV	As required	26	2	2		28	1	
		Field Density	1 Test/ 1000 m <sup>2</sup>	486	20	20		506		
5	CEMENT TREATED SUB BASE [ CTSB ]	Gradation	1 Test/ 400 cum of mix	10				10		
		Atterberg's Limits	1 Test/ 400 cum of mix	1				1		
		Proctor	As required	1				1		
		AIV	As required	1				1		
		07 Days Unconfined Compressive Strength (UCS)	1 Test of 3 Specimens 400 tonnes of mix (2 test per Day.)	3				3		
		Field Density	1 Specimens of 2 Test/ 500 sq.m							
6	CEMENT TREATED BASE [ CTB ]	Gradation	1 Test/ 400 cum of mix	10				10		
		Atterberg's Limits	1 Test/ 400 cum of mix	1				1		
		Proctor	As required	1				1		
		AIV	As required	1				1		

**MONTHLY PROGRESS REPORT FOR THE MONTH OF SEPTEMBER 2025 PACKAGE-IV**

SL NO	DESCRIPTION	TYPE OF TEST	FREQUENCY OF TESTING	NO.OF TEST CONDUCTED TILL PREVIOUS MONTH	TOTAL TEST CONDUCTED FOR THIS MONTH	NO.OF TEST CONDUCTED FOR THE MONTH		NO.OF TEST CONDUCTED UPTO MONTH	TEST WITNESSED BY IE/NHAI FOR THE MONTH	REMARKS
						PASS	FAIL			
		07 Days Unconfined Compressive Strength (UCS)	1 Test of 3 Specimens 400 tonnes of mix (2 test per Day.)	3				3		
		07 Days Flexural Strength	1 Test of 3 Specimens 400 tonnes of mix (2 test per Day.)	1				1		
		Field Density	1 Specimens of 2 Test/ 500 sq.m							
7	AGGREGATE INTER LAYER [AIL]	Gradation of Mix Agg.	1 Test/ 200 m <sup>3</sup>	10				10		
		Atterberg's Limits	1 Test/ 200 m <sup>3</sup>	1				1		
		Proctor	As required	1				1		
		AIV Test	1 Test/ 1000 m <sup>3</sup>	1				1		
		Fl& El Test	1 Test/ 500 m <sup>3</sup>	1				1		
		Field Density	1 Set of 3 Test/ 1000 m <sup>2</sup>							
5	WET MIX MACADAM [W.M.M]	Gradation of Mix Agg.	1 Test/ 200 m <sup>3</sup>	3				3		
		Atterberg's Limits	1 Test/ 200 m <sup>3</sup>	1				1		
		Proctor	As required	1				1		
		AIV Test	1 Test/ 1000 m <sup>3</sup>	1				1		
		Fl& El Test	1 Test/ 500 m <sup>3</sup>	1				1		
		Field Density	1 Set of 3 Test/ 1000 m <sup>2</sup>							
6	PRIME/TACK COAT	Quality of binder	1 Samples / lot(Vehicle)							
		Binder Temperature	At Regular intervals							
		Rate of Spread of Binder	3 Tests/ Day							
7	BITUMEN	Penetration	3 tests/Lot							
		Viscosity	3 tests/Lot							
		Softening Point	3 tests/Lot							
8	DENSE BITUMINOUS MACADAM [D.B.M]	Agg. Impact Value	1 Test/ 350 m <sup>3</sup>							
		Fl& El Indices	1 Test/ 350 m <sup>3</sup>							
		Sp.Gravity & W.Absorption	1 Set of Test on Source							
		Mix Gradation	1 Test/400 Tons							
		Stability of Mix	1 Set/400 Tons							
		Binder Content	1Test/400 Tons							
		Gmm	1Test/day/plant							
		Density of Core	1Test/ 700 m <sup>2</sup>							
		Agg. Impact Value	1 Test/ 350 m <sup>3</sup>							
		Fl& El Indices	1 Test/ 350 m <sup>3</sup>							
		Sp.Gravity & W.Absorption	1 Set of Test							

**MONTHLY PROGRESS REPORT FOR THE MONTH OF SEPTEMBER 2025 PACKAGE-IV**

SL NO	DESCRIPTION	TYPE OF TEST	FREQUENCY OF TESTING	NO.OF TEST CONDUCTED TILL PREVIOUS MONTH	TOTAL TEST CONDUCTED FOR THIS MONTH	NO.OF TEST CONDUCTED FOR THE MONTH		NO.OF TEST CONDUCTED UPTO MONTH	TEST WITNESSED BY IE/NHAI FOR THE MONTH	REMARKS	
						PASS	FAIL				
9	BITUMINOUS CONCRETE [ B.C]	Mix Gradation	1 Test/400 Tons								
		Stability of Mix	1 Set/400 Tons								
		Control of binder & Grada.in the mix	1Test/400 Tons								
		Gmm	1Test/day/plant								
		Density of Core	1Test/ 700 m <sup>2</sup>								
10	CONCRETE	<b>COMPRESSIVE STRENGTH -</b>									
		<b>M -10 GRADE PCC</b>									
		07 Days	As per MoRT&H	73	4	4		77	1		
		28 Days		131	14	14		145	12		
		<b>M -15 GRADE PCC</b>									
		07 Days	As per MoRT&H	148	28	28		176	6		
		28 Days		229	8	8		237	5		
		<b>M -20 GRADE RCC</b>									
		07 Days	As per MoRT&H	16	4	4		20	1		
		28 days		55				55			
		<b>M -20 GRADE (KERB)</b>									
		07 Days	As per MoRT&H								
		28 Days									
		<b>M -25 GRADE RCC</b>									
		07 Days	As per MoRT&H	120	7	7		127	2		
		28 Days		216				216			
		<b>M -30 GRADE RCC &amp; Precast</b>									
		07 Days	As per MoRT&H	101	11	11		112	4		
		28 Days		268	17	17		285	5		
			CONCRETE	<b>M -35 GRADE RCC &amp; Precast</b>							
07 Days	As per MoRT&H			406	94	94		500	18		
28 Days				1272	220	220		1492	83		
<b>M -40 GRADE RCC</b>											
07 Days	As per MoRT&H			150	114	114		264	14		
28 Days				225	192	192		417	70		
<b>M -45 GRADE RCC</b>											
07 Days	As per MoRT&H										
28 Days											
<b>M -50 GRADE RCC</b>											
07 Days	As per MoRT&H	6	6	6		12	4				
28 Days		11	9	9		20	3				
11	DLC	07 Days	One set /1000 Sqm								
		Field Density	3 Density Holes/2000 Sqm								
12	PQC	<b>M -40 GRADE</b>									
		Cubes	07 Days								
			28 Days								

**MONTHLY PROGRESS REPORT FOR THE MONTH OF SEPTEMBER 2025 PACKAGE-IV**

SL NO	DESCRIPTION	TYPE OF TEST	FREQUENCY OF TESTING	NO.OF TEST CONDUCTED TILL PREVIOUS MONTH	TOTAL TEST CONDUCTED FOR THIS MONTH	NO.OF TEST CONDUCTED FOR THE MONTH		NO.OF TEST CONDUCTED UPTO MONTH	TEST WITNESSED BY IE/NHAI FOR THE MONTH	REMARKS	
						PASS	FAIL				
		Beams	07 Days	As per MORT&C							
			28 Days								
13	CEMENT	Consistency	1 Test / week/Source	24	5	5		29	2		
		Initial and Final Setting Time	1 Test / week/Source	24	5	5		29	2		
		Specific Gravity	As & when Required								
		Soundness	1 Test / week/Source	24	5	5		29	2		
		Finness	1 Test / week/Source	24	5	5		29	2		
		Compressive Strength	1 Test / week/Source	65	14	14		79	6		
14	CEMENT GROUT	Compressive Strength	1 Set / Day/Girder								
15	CEMENT MORTAR	Compressive Strength	1 Set / Day								
16	WATER	Water Tests	Every 3 month	5				5			
17	STEEL	32mm dia.	Min 2 Samples / 100 MT	3				3			
		25 mm dia.	Min 2 Samples / 100 MT	4				4			
		20 mm dia.	Min 2 Samples / 100 MT	6				6			
		16 mm dia.	Min 2 Samples / 100 MT	6				6			
		12 mm dia.	Min 2 Samples / 100 MT	5				5			
		10 mm dia	Min 2 Samples / 100 MT	4				4			
		8 mm dia	Min 2 Samples / 100 MT	3				3			
		Structural Steel	Each and every Lot								
		HT Strands	1 Test /Each Coil/Lot	1				1			
18	FINE AGGREGATE	Sieve Analysis	1 Test/day/plant/Source	183	60	60		243	13		
		Sp.Gravity & W.Absorption	As & when Required	5				5			
		Organic Impurities	As & when Required								
19	COARSE AGGREGATES	Sieve Analysis	1 Test/day/plant/Source	452	180	180		632	39		
		Sp.Gravity & W.Absorption	As & when Required	6				6			
		A I V Tests	1 Test/week/plant/Source	22	9	9		31	4		
		E.I & F.I Index	1 Test/fort night/plant	21	9	9		30	4		
20	CALIBRATION	Plant	Every 3 month	3				3			
		Lab. Equipments	As per Calibration Plan	67	10	10		77	10		

**CONSTRUCTION OF 4-LANING OF SHAHGANJ BYPASS END TO BADI (PACKAGE-IV) OF NH-146B FROM DESIGN KM 102+000 TO DESIGN KM142+357(DESIGN LENGTH 40.357 KM) UNDER NH(O) IN THE STATE OF MADHYA PRADESH ON HYBRID ANNUITY MODE**



CLIENT : NATIONAL HIGHWAYS AUTHORITY OF INDIA  
 CONCESSIONAIRE : SHAHGANJ BADI HIGHWAY PRIVATE LIMITED  
 INDEPENDENT ENGINEER : SAPTAGON ASIA PVT. LTD.  
 EPC CONTRACTOR : MCC INFRA TECH PRIVATE LIMITED

**WEATHER RECORD FOR THE MONTH SEPTEMBER - 2025 Lab @ Ch-107+500 RHS**

SR.No	DATE	RAIN FALL IN (MM)	CUMM RAIN FALL IN (MM)	HUMIDITY (%)	TEMPRATURE °C		REMARKS
					8:00 AM		
					MIN	MAX	
1	01-Sep-24	28.0	28.0	99	25.5	32.6	
2	02-Sep-24	44.0	72.0	99	24.7	36.1	
3	03-Sep-24	46.2	118.2	99	24.3	35.6	
4	04-Sep-24	22.4	140.6	99	24.1	36.3	
5	05-Sep-24	21.8	162.4	99	24.4	35.8	
6	06-Sep-24	3.0	165.4	99	24.8	36.2	
7	07-Sep-24	0.0	165.4	97	25.3	36.4	
8	08-Sep-24	0.0	165.4	85	25.7	37.1	
9	09-Sep-24	0.0	165.4	90	25.5	36.4	
10	10-Sep-24	0.0	165.4	94	25.9	35.8	
11	11-Sep-24	18.2	183.6	99	25.1	35.4	
12	12-Sep-24	0.0	183.6	96	25.8	34.6	
13	13-Sep-24	0.0	183.6	98	25.4	35.1	
14	14-Sep-24	0.0	183.6	95	26.0	36.9	
15	15-Sep-24	21.2	204.8	99	25.6	35.4	
16	16-Sep-24	16.4	221.2	99	24.9	33.4	
17	17-Sep-24	19.2	240.4	99	25.1	34.4	
18	18-Sep-24	0.0	240.4	96	24.9	35.9	
19	19-Sep-24	0.0	240.4	98	25.8	36.9	
20	20-Sep-24	22.0	262.4	98	25.9	36.5	
21	21-Sep-24	0.0	262.4	97	25.7	36.0	
22	22-Sep-24	0.0	262.4	97	25.3	35.9	
23	23-Sep-24	12.0	274.4	99	24.8	37.8	
24	24-Sep-24	0.0	274.4	99	24.8	37.9	
25	25-Sep-24	0.0	274.4	99	24.8	37.8	
26	26-Sep-24	21.0	295.4	99	24.8	36.6	
27	27-Sep-24	27.0	322.4	99	25.8	38.3	
28	28-Sep-24	0.0	322.4	99	24.8	39.8	
29	29-Sep-24	23.0	345.4	99	23.6	38.3	
30	30-Sep-24	0.0	345.4	99	24.0	38.4	

CONSTRUCTION OF 4-LANING OF SHAHGANJ BYPASS END TO BADI (PACKAGE-IV) OF NH-146B FROM DESIGN KM 102+000 TO DESIGN KM142+357(DESIGN LENGTH 40.357 KM) UNDER NH(O) IN THE STATE OF MADHYA PRADESH ON HYBRID ANNUITY MODE



CLIENT	: NATIONAL HIGHWAYS AUTHORITY OF INDIA
CONCESSIONAIRE	: SHAHGANJ BADI HIGHWAY PRIVATE LIMITED
INDEPENDENT ENGINEER	: SAPTAGON ASIA PVT. LTD.
EPC CONTRACTOR	: MCC INFRATECH PRIVATE LIMITED

**LIST OF LAB EQUIPMENTS @ Ch-107+500 RHS, JAWAHARKHEDA  
(MAIN CAMP)**

Sr. NO.	ITEM NAME	CAPACITY	Total Available Qty	REMARK
1	PROCTOR MOULD	2250 CC	5	
2	PROCTOR MOULD	1000 cc	3	
3	PROCTOR RAMMER	4.89 Kg.	5	
4	PROCTOR RAMMER	2.6 Kg.	3	
5	CUTTER SCALE FOR PROCTOR		5	
6	HEMMAR (Rubber)		2	
7	HEMMAR (Iron)		3	
8	GLOVES RUBBER		15	
9	GLOVES COTTON		15	
10	C.B.R MOULD	2250 cc	66	
11	C.B.R MACHINE		1	
12	PROVING RING	50 KN	1	
13	PROVING RING	30 KN	1	
14	PROVING RING	2.5 KN	1	
15	DIFFLECTION DIAL GUAGE	25 MM	20	
16	SURCHARGE WEIGHT	05 Kg.	16	
17	SURCHARGE WEIGHT	2.5 Kg.	62	
18	SPACER DISC FOR CBR		2	
19	PERFORATED PLATE		46	
20	PLUNGER FOR CBR		5	
21	TRIPOD FOR CBR		30	
22	SPATULA	4 Inch	6	
23	CONE PENETROMETER (LL/PI)		1	
24	CASSGRAND APP.FOR LL/PI		1	
25	MOISTURE CONTAINER	A SIZE	60	
26	MOISTURE CONTAINER	B SIZE	40	
27	MOISTURE CONTAINER	C SIZE	178	
28	ELECTRONIC BALANCE (Platform Balance)	200 Kg.	1	
29	ELECTRONIC BALANCE	50 Kg.	1	
30	ELECTRONIC BALANCE	30 Kg.	2	
31	ELECTRONIC BALANCE	20 Kg.	1	
32	ELECTRONIC BALANCE	10 Kg.	2	
33	ELECTRONIC BALANCE	5 Kg	1	
34	ELECTRONIC BALANCE	600 gm	2	
35	POURING CYLINDER (SMALL) FDD SET	100 MM	2	
36	POURING CYLINDER (MEDIUM) FDD SET	150 MM	2	
37	POURING CYLINDER (BIG) FDD SET	200 mm	2	
38	POURING CYLINDER TRAY (SMALL) FDD	100 MM	2	
39	POURING CYLINDER TRAY(MEDIUM) FDD	150 MM	2	
40	POURING CYLINDER TRAY(BIG) FDD	200 mm	2	
41	RMM	Capacity 25%	2	
42	CALCIUM CARBIDE FOR RMM	PACKETS	10	
43	MEASURING CYLINDER (GLASS)	<b>38</b> 0 ml.	45	

**CONSTRUCTION OF 4-LANING OF SHAHGANJ BYPASS END TO BADI (PACKAGE-IV) OF NH-146B FROM DESIGN KM 102+000 TO DESIGN KM142+357(DESIGN LENGTH 40.357 KM) UNDER NH(O) IN THE STATE OF MADHYA PRADESH ON HYBRID ANNUITY MODE**



CLIENT : NATIONAL HIGHWAYS AUTHORITY OF INDIA  
 CONCESSIONAIRE : SHAHGANJ BADI HIGHWAY PRIVATE LIMITED  
 INDEPENDENT ENGINEER : SAPTAGON ASIA PVT. LTD.  
 EPC CONTRACTOR : MCC INFRATECH PRIVATE LIMITED

**LIST OF LAB EQUIPMENTS @ Ch-107+500 RHS, JAWAHARKHEDA  
 (MAIN CAMP)**

Sr. NO.	ITEM NAME	CAPACITY	Total Available Qty	REMARK
44	MEASURING CYLINDER (GLASS)	500 ml.	7	
45	MEASURING CYLINDER (GLASS)	1000 ml.	2	
46	MEASURING CYLINDER (PLASTIC)	500 ml.	2	
47	MEASURING CYLINDER (PLASTIC)	1000 ml.	2	
48	BEAKER (GLASS)	500 ml.	8	
49	BEAKER (GLASS)	1000 ml.	1	
50	BOROSIL FLASK	100 ml.	1	
51	GMM FILTERING FLASK WITH RUBBER CORK	500 ml	1	
52	GMM FILTERING FLASK WITH RUBBER CORK	2000 ml	2	
53	GMM FILTERING FLASK WITH RUBBER CORK	5000 ml	2	
54	FUNNEL	50mm,100mm	1 Each	
55	PYCNOMETER BOTTEL FOR SPG		8	
56	DEPTH MEASURING SCALE	300 mm	3	
57	GLASS PLATE	100X80 mm	2	
58	GLASS PLATE	200X200 mm	2	
59	GLASS PLATE	600X600 mm	1	
60	DIGITAL THERMOMETER	0°C TO 300°C	6	
61	GLASS THERMOMETER	0°C TO 250°C	8	
62	VERNIER CALIPER DIGITAL	300 mm	1	
63	HYDROMETER	0.80 to 0.90 & 1.0 to 1.5	1 Each	
64	STOP WATCH		2	
65	HYGROMETER	MIN. & MAX. TEMP.	2	
66	GI TRAY (BIG SIZE)	1200X1000 MM	3	
67	GI TRAY (BIG SIZE)	1000X1000 MM	1	
68	GI TRAY (BIG SIZE)	1000X500 MM	2	
69	ENAMEL TRAY	600X450 MM	6	
70	GI TRAY	600X450 MM	16	
71	GI TRAY (MEDIUM SIZE)	600X400 MM	1	
72	GI TRAY (SMALL SIZE)	400X350MM	1	
73	ENAMEL TRAY (SMALL SIZE)	450X300 MM	15	
74	GI TRAY (SMALL SIZE)	450X300 MM	18	
75	ENAMEL TRAY (SMALL SIZE)	350X250 MM	12	
76	ENAMEL CIRCULAR PLATE	250MM	12	
77	COOLING BATH DIGITAL		1	
78	WATER BATH DIGITAL 60°C WITH THERMOSTATICALLY CONTROL	30 Liter capacity	2	
79	OVEN (BIG)	1250X750 MM	1	(Sr No.160212)

**CONSTRUCTION OF 4-LANING OF SHAHGANJ BYPASS END TO BADI (PACKAGE-IV) OF NH-146B FROM DESIGN KM 102+000 TO DESIGN KM142+357(DESIGN LENGTH 40.357 KM) UNDER NH(O) IN THE STATE OF MADHYA PRADESH ON HYBRID ANNUITY MODE**



CLIENT : NATIONAL HIGHWAYS AUTHORITY OF INDIA  
 CONCESSIONAIRE : SHAHGANJ BADI HIGHWAY PRIVATE LIMITED  
 INDEPENDENT ENGINEER : SAPTAGON ASIA PVT. LTD.  
 EPC CONTRACTOR : MCC INFRATECH PRIVATE LIMITED

**LIST OF LAB EQUIPMENTS @ Ch-107+500 RHS, JAWAHARKHEDA  
 (MAIN CAMP)**

Sr. NO.	ITEM NAME	CAPACITY	Total Available Qty	REMARK
80	OVEN (MEDIUM)	900X600 MM	1	(Sr No.081141)
81	OVEN (SMALL)	600X600 MM	1	
82	DRYING OVEN	225 Liter	2	
83	HOT PLATE	200 mm	1	
84	FI GUAGE		2	
85	ELONGATION GUAGE		2	
86	SIEVE SHAKER	200mm	1	
87	CYLINDER FOR BULK DENSITY OF AGGREGATE	3Ltr,10 Ltr. & 30 Ltr.	1 Set	
88	BEAM MOULD	15X15X70CM	3	
89	CONCRETE CUBE MOULD	15X15X15CM	100	
90	GROUTING CUBE MOULD	10X10X10CM	10	
91	CEMENT CUBE MOULDS	7.06X7.06X7.06	34	
92	MORTAR CUBE MOULD	5X5X5	6	
93	SLUMP CONE WITH TEMPING RODS		9	
94	AIV APPRATUS WITH ALL ASSESORIES		1	
95	COMPRESSIVE STRENGTH TEST(CTM) DIGITAL	2000 KN	1	
96	FLEXTURAL TESTING MACHINE	100 KN	1	
97	CONCRETE MIXER MACHINE WITH CAP	150 Liter Capacity	1	Electrically operated
98	VIBRATING TABLE	1MX1M	1	
99	CEMENT CUBE VIBRETING MACHINE		1	
100	VICAT.APP.WITH ASS.		1	
101	VICAT.APP NEEDLE FOR INITIAL SETTING TIME		1	
102	VICAT.APP NEEDLE FOR FINAL SETTING TIME		1	
103	VICAT.APP PLUNGER FOR CONSISTENCY		1	
104	SOUNDNESS TEST APPARATUS (CEMENT)	PACKETS	2	
105	LE-CHATLEIR FLASK		1	
106	STANDERD SAND ZONE-I,II,III		2 Each	
107	GAUGING TROWEL		2	
108	WIRE BASKET FOR DENSITY		2	
109	RIFFLE BOX (SAMPLE DIVIDER)	75 mm	1	
110	RIFFLE BOX (SAMPLE DIVIDER)	53 mm	1	
111	RIFFLE BOX (SAMPLE DIVIDER)	25 mm	1	
112	SAND SCOOP (Small)		5	
113	CORE CUTTER MACHINE - HILTI DD-160	150 mm Dia	1	
114	CORE BIT (DIAMOND CUTTING EDGE)	100 mm Dia	2	
115	CORE BIT (DIAMOND CUTTING EDGE)	150 mm Dia	2	
116	FLOW CUP	<b>40</b>	1	

**CONSTRUCTION OF 4-LANING OF SHAHGANJ BYPASS END TO BADI (PACKAGE-IV) OF NH-146B FROM DESIGN KM 102+000 TO DESIGN KM142+357(DESIGN LENGTH 40.357 KM) UNDER NH(O) IN THE STATE OF MADHYA PRADESH ON HYBRID ANNUITY MODE**



CLIENT : NATIONAL HIGHWAYS AUTHORITY OF INDIA  
 CONCESSIONAIRE : SHAHGANJ BADI HIGHWAY PRIVATE LIMITED  
 INDEPENDENT ENGINEER : SAPTAGON ASIA PVT. LTD.  
 EPC CONTRACTOR : MCC INFRA TECH PRIVATE LIMITED

**LIST OF LAB EQUIPMENTS @ Ch-107+500 RHS, JAWAHARKHEDA  
 (MAIN CAMP)**

Sr. NO.	ITEM NAME	CAPACITY	Total Available Qty	REMARK
117	DLC COMPECTOR (HILTI TE-1000 AIR)		1	
118	AIR METER FOR CONCRETE MIX Autometric type As per ASTM C231		1	
119	COMPACTION FACTOR EQUIPMENT CONCRETE As per IS:5515-1983		1	
120	WASH BOTTLE PLASTIC	1 LTR	1	
121	3 METER STRAIGHT EDGE AND MEASURING WEDGE		1 Set	
122	Digital Depth Gage	INSIZE	1	
123	BITUMEN EXTRACTION MACHINE		1	
124	MARSHALL STABILITY		1	
125	COMPACTION PEDESTAL		1	
126	VACUUM PUMP		1	
127	RING AND BALL APPARATUS		1	
128	BITUMEN PENETROMETER		1	
129	TAR VISCOMETER		1	
130	VISCOSITY BATH		1	
131	MARSHAL MOULD WITH CALLOR	100 mm Dia	12	
132	RAIN GAUGE		1	
133	<b>SIEVE SIZE 450 mm dia</b>			
	125mm		2	
	75mm		3	
	63 mm		2	
	53 mm		5	
	50 mm		3	
	45mm		3	
	40mm		4	
	37.5mm		1	
	31.5mm		1	
	26.5mm		5	
	25mm		3	
	22.4 mm		1	
	20mm		4	
	19mm		3	
	16mm		3	
	14mm		1	
	13.2mm		2	
	12.5mm		3	
	11.2mm		2	
	10mm		5	
	9.5mm		5	
	8mm		1	
	6.7mm		1	
	6.3mm		4	

**CONSTRUCTION OF 4-LANING OF SHAHGANJ BYPASS END TO BADI (PACKAGE-IV) OF NH-146B FROM DESIGN KM 102+000 TO DESIGN KM142+357(DESIGN LENGTH 40.357 KM) UNDER NH(O) IN THE STATE OF MADHYA PRADESH ON HYBRID ANNUITY MODE**



CLIENT	: NATIONAL HIGHWAYS AUTHORITY OF INDIA
CONCESSIONAIRE	: SHAHGANJ BADI HIGHWAY PRIVATE LIMITED
INDEPENDENT ENGINEER	: SAPTAGON ASIA PVT. LTD.
EPC CONTRACTOR	: MCC INFRA TECH PRIVATE LIMITED

**LIST OF LAB EQUIPMENTS @ Ch-107+500 RHS, JAWAHARKHEDA (MAIN CAMP)**

Sr. NO.	ITEM NAME	CAPACITY	Total Available Qty	REMARK
	5.8mm		1	
	5.6mm		2	
	4.75mm		9	
	2.8mm		1	
	2.36mm		5	
	1.4mm		1	
	1.18 mm		2	
	LID & PAN		2	
134	<b>SIEVE SIZE 200 mm dia Brass</b>			
	6.3mm		4	
	4.75mm		4	
	2.36mm		4	
	2.0mm		6	
	1.7mm		3	
	1.18mm		3	
	1.0 mm		3	
	850mic		4	
	600mic		2	
	425mic		4	
	300mic		3	
	250mic		3	
	180mic		1	
	150mic		2	
	125mic		3	
	90mic		3	
	75mic		6	
	45mic		4	
	LID & PAN		3	

**CONSTRUCTION OF 4-LANING OF SHAHGANJ BYPASS END TO BADI (PACKAGE-IV) OF NH-146B FROM DESIGN KM 102+000 TO DESIGN KM142+357(DESIGN LENGTH 40.357 KM) UNDER NH(O) IN THE STATE OF MADHYA PRADESH ON HYBRID ANNUITY MODE**



**CLIENT** : NATIONAL HIGHWAYS AUTHORITY OF INDIA  
**CONCESSIONAIRE** : SHAHGANJ BADI HIGHWAY PRIVATE LIMITED  
**INDEPENDENT ENGINEER** : SAPTAGON ASIA PVT. LTD  
**EPC CONTRACTOR** : MCC INFRA TECH PRIVATE LIMITED

**CALIBRATION PLAN MAIN LAB @ Ch- 107+500 RHS**

S. No.	Description of Equipment / Device	Equipment code/ Identification	Calibration Agency	Frequency of Calibration	Calibration Verifying Document	Date of Calibration	Next Due Date of Calibration	Remark
1	Proctor Moulds Modified	SBHPL/QC-1/MCC/PM/1-5	In House	Every 3 months	Available in Records	08-06-25	07-09-25	
2	Proctor Moulds Standard	SBHPL/QC-1/MCC/PM/1-3	In House	Every 3 months	Available in Records	08-06-25	07-09-25	
3	Proctor Rammer 4.9kg	SBHPL/QC-1/MCC/PH/1-5	In House	Every 3 months	Available in Records	08-06-25	07-09-25	
4	Proctor Rammer 2.6kg	SBHPL/QC-1/MCC/PH/6-8	In House	Every 3 months	Available in Records	08-06-25	07-09-25	
5	CBR Moulds	SBHPL/QC-1/MCC/CM/1-66	In House	Every 3 months	Available in Records	08-06-25	07-09-25	
6	Proving Ring 50 KN	SBHPL/MCC/PR/50KN/01	DVG Laboratories & Consultants Pvt.Ltd	26 months	Available in Records	12-12-24	12-02-27	
7	Proving Ring 30 KN	SBHPL/MCC/PR/30KN/01	DRS Testing Technology Pvt.Ltd	26 months	Available in Records	04-01-25	03-03-27	
8	Proving Ring 2.5 KN	SBHPL/MCC/PR/2.5KN/01	DRS Testing Technology Pvt.Ltd	26 months	Available in Records	04-01-25	03-03-27	
9	Surcharg Weights	SBHPL/QC-1/MCC/SW/1-76	In House	1 Year	Available in Records	09-03-25	08-06-26	
10	Cone Penetrometer	SBHPL/QC-1/MCC/CP/01	In House	1 Year	Available in Records	09-03-25	08-06-26	
11	Moisture Containers (Steel)	SBHPL/QC-1/MCC/MC/1-247	In House	Every 3 months	Available in Records	09-06-25	08-09-25	
12	Electronic Balance 50 Kg	SBHPL/MCC/WB/50/2	Premium Calibration Services	1 Year	Available in Records	10-12-24	09-12-25	
13	Electronic Balance 30 Kg	SBHPL/MCC/WB/30/1-2	Premium Calibration Services	1 Year	Available in Records	10-12-24	09-12-25	
14	Electronic Balance 20 Kg	SBHPL/MCC/WB/20/3	Premium Calibration Services	1 Year	Available in Records	10-12-24	09-12-25	
15	Electronic Balance 10 Kg	SBHPL/MCC/WB/10/1-2	Premium Calibration Services	1 Year	Available in Records	10-12-24	09-12-25	
16	Electronic Balance 5 Kg	SBHPL/MCC/WB/5/1	Premium Calibration Services	1 Year	Available in Records	10-12-24	09-12-25	
17	Electronic Balance 5 Kg	SBHPL/MCC/WB/5/2	Kumar Brother	1 Year	Available in Records	15-05-25	14-05-26	
18	Electronic Balance 600 gm	SBHPL/MCC/WB/600/1-2	Premium Calibration Services	1 Year	Available in Records	10-12-24	09-12-25	
19	Sand Pouring Cylinder 100 mm	SBHPL/QC-1/MCC/SPC-100/01	In House	Every 3 months	Available in Records	09-06-25	08-09-25	
20	Sand Pouring Cylinder 150 mm	SBHPL/QC-1/MCC/SPC-150/01	In House	Every 3 months	Available in Records	09-06-25	08-09-25	
21	Sand Pouring Cylinder 200 mm	SBHPL/QC-1/MCC/SPC-200/01	In House	Every 3 months	Available in Records	09-06-25	08-09-25	
22	Rapid Moisture Meter (RMM)	SBHPL/QC-1/MCC/RMM/01	In House	Every 3 months	Available in Records	09-06-25	08-09-25	
23	Digital Thermometer	SBHPL/MCC/TH/1-2	Premium Calibration Services	1 Year	Available in Records	10-12-24	09-12-25	
24	Glass Thermometer	SBHPL/MCC/GT/1-2	Premium Calibration Services	1 Year	Available in Records	10-12-24	09-12-25	

**CALIBRATION PLAN MAIN LAB @ Ch- 107+500 RHS**

S. No.	Description of Equipment / Device	Equipment code/ Identification	Calibration Agency	Frequency of Calibration	Calibration Verifying Document	Date of Calibration	Next Due Date of Calibration	Remark
25	Vernier Caliper Digital	SBHPL/MCC/DVC/1	Premium Calibration Services	1 Year	Available in Records	10-12-24	09-12-25	
26	Measuring Tape	SBHPL/MCC/MT/1	Premium Calibration Services	1 Year	Available in Records	10-12-24	09-12-25	
27	Stop Watch Digital	SBHPL/MCC/DSW/1	Premium Calibration Services	1 Year	Available in Records	10-12-24	09-12-25	
28	S.S.Scale	SBHPL/MCC/SS/01	Premium Calibration Services	1 Year	Available in Records	10-12-24	09-12-25	
29	Flakiness Gauge	SBHPL/MCC/FI/01	Premium Calibration Services	1 Year	Available in Records	10-12-24	09-12-25	
30	Elongation gauge	SBHPL/MCC/EI/01	Premium Calibration Services	1 Year	Available in Records	10-12-24	09-12-25	
31	Vacuum gauge	SBHPL/MCC/VG/01	Premium Calibration Services	1 Year	Available in Records	10-12-24	09-12-25	
32	Bitumen Extraction Machine	SBHPL/MCC/BE/01	Premium Calibration Services	1 Year	Available in Records	10-12-24	09-12-25	
33	Water bath Digital	SBHPL/MCC/WB/1-2	Premium Calibration Services	1 Year	Available in Records	10-12-24	09-12-25	
34	Hot Air Oven	SBHPL/MCC/OV/1-5	Premium Calibration Services	1 Year	Available in Records	10-12-24	09-12-25	
35	Concrete Cube Moulds	SBHPL/QC-1/MCC/CCM/1-100	In House	Every 3 months	Available in Records	07-07-25	06-10-25	
36	Cement Cube Moulds	SBHPL/QC-1/MCC/CM/1-34	In House	Every 3 months	Available in Records	07-07-25	06-10-25	
37	Slump Cone	SBHPL/QC-1/MCC/SC/1-9	In House	Every 3 months	Available in Records	08-07-25	06-10-25	
38	AIV Appratus	SBHPL/QC-1/MCC/AIV/1	In House	Every 3 months	Available in Records	10-01-25	09-01-26	
39	Compressive Strength Machine (CTM) 2000 KN	SBHPL/MCC/DCTM/01	Asain Technology	1 Year	Available in Records	12-12-24	11-12-25	
40	Flextural Testing Machine (FTM) 100 KN	SBHPL/MCC/FTM/01	Asain Technology	1 Year	Available in Records	12-12-24	11-12-25	
41	CEMENT CUBE VIBRETING MACHINE	SBHPL/MCC/VM/01	Asain Technology	1 Year	Available in Records	10-12-24	09-12-25	
42	Vicat Apparatus	SBHPL/QC-1/MCC/VA/01	In House	1 Year	Available in Records	10-01-25	09-01-26	
43	IS Sieve (450mm Dia)	SBHPL/MCC/GIS/1-26	Premium Calibration Services	1 Year	Available in Records	10-12-24	09-12-25	
44	IS Sieve (200mm Dia)	SBHPL/MCC/BS/1-19	Premium Calibration Services	1 Year	Available in Records	10-12-24	09-12-25	
45	Concrete Batching Plant (BP-01) @ 107+500 RHS	SBHPL/MCC/BP-01	In House	Every 3 months	Available in Records	09-07-25	08-10-25	
46	Concrete Batching Plant (BP-02) @ 125+000 LHS	SBHPL/MCC/BP-02	In House	Every 3 months	Available in Records	04-08-25	03-11-25	

# Change of Scope

Some additional structures / culverts / service roads etc have to be provided for which COS has been notified by Authority Engineer and detailed proposal is under process with the EPC Contractor.

COS No.	COS Proposal Details	Date of first submission to the Authority	Current Status	COS Amount (INR Cr.)	Status of Approval
COS No.-1	<p>Additional work coming under Change of Scope intimated to NHAI &amp; IE vide Letter No. SBHPL/NHAI/FY24-25/127 dated 16th June 2025.</p> <p>The Change of Scope Works are summarized as below:</p> <ol style="list-style-type: none"> <li>1.Change in Box Culvert size From (1 X 5.00 X 3.8) To (1 X 12.00 X 3.8) @ Kms 105+780</li> <li>2.4 nos Pipe Culvert @ Km 124+900, Km 125+020, Km 125+690 &amp; Km 126+100 at Canal Crossing in Baktra Bypass</li> <li>3.New Pipe Culvert @ KM 126+880 for Irrigation Canal Crossing</li> <li>4.New Pipe Culvert @ KM 130+520 for Irrigation Canal Crossing</li> <li>5.New Pipe Culvert @ KM 130+880 for irrigation Canal Crossing</li> <li>6.At Km 124+400 provision of Both Direction VUP (15+30+15)</li> <li>7.Additional VUP @ km. 125+000 &amp; RE Wall Approach Baktra Bypass with RE Wall and Earthwork</li> <li>8.Change in Minor Bridge size From (1 X 7.00) To (1 X 20.00) @ Kms 135+950</li> <li>9.Change in Box Culvert size From (1 X 5.00 X 3.7) To MNB (1 X 20.00 ) and deletion of VUP at Kms 139+930 with SR</li> <li>10.Additional New Box Culvert @ Km. 142+290 for irrigation canal</li> <li>11.Shifting of Irrigation Canal from 126+700 To 127+250 LHS from ROW</li> <li>12.Shifting of Irrigation Canal from Km 128.400 TO 130.500 LHS from ROW</li> <li>13.Construction of Toe Wall/Provision of Retaining Wall where ROW is nor Available excluding Provision of Schedule-B</li> <li>14.Utility Shifting of GSS</li> <li>15.PHED pipe line extra work as per Schedule-B Exclude GST 18%</li> <li>16.PHED pipe line Canal Syphon work 1200 Dia Pipe</li> <li>17.3 nos Pipe Culvert @ Km at Canal Crossing in Various Locations 113572, 118070, 122440 (IE Letter No. 287 Dated 16.09.2025)</li> <li>18.5 nos Pipe Culvert @ Km at Canal Crossing in Various Locations 138920, 138380, 134800, 131230,130500 (IE Letter No. 229 Dated 16.09.2025)</li> <li>19.Construction of Servicer Road in Rigid Pavement in lieu of Flexible Pavement as per NHAI Circular</li> <li>20.Additional Pipe Culvert at Ch. @ 141780 (IE Letter No. 171 Dated:- 30.08.2025)</li> </ol>	16th June 2025	<p>COS-I Submitted for In Principal approval vide letter No. SBHPL/NHAI/FY24-25/127 dated 16th June 2025</p> <p>Observations Raised by Independent Engineer vide letter no. SAPL/MP/2025-25/441 dated 03.07.2025</p> <p>Compliance Submitted by Concessionaire vide letter no. SBHPL/NHAI/25-26/189 dated 14.07.2025</p> <p>Independent Engineer Forward the Change of Scope of Amount Rs 37.16 Cr. to Authority (NHAI) for In-principal Approval vide letter no. SAPL/MP/2025-26/644 dated 21.08.2025</p> <p>Observations raised by Authority (NHAI) vide letter no. NHAI/PIU/BPL/Budhni-Badi/IE/Pkg-IV/COS/2025/28465 dated 03.09.2025</p> <p>Revised Submission with compliance is submitted by concessionaire vide letter no. SBHPL/NHAI/25-26/325 dated 27.09.2025</p> <p>Independent Engineer Forward the Change of Scope of Amount Rs 38.28 Cr. to Authority (NHAI) for In-principal Approval vide letter no. SAPL/MP/2025-26/801 dated 29.09.2025</p>	<p>Rs. 40.25 Crore</p> <p>Rs. 50.22 Crore</p> <p>Rs. 37.16 Crore</p> <p>Rs. 38.28 Crore</p>	Under process

# Accident Report

Sr. No	Date	Chainage	Time of Accident	Sex (M/F)	A	B	C	D	E	F	G	H	I	J	K	No. of Effected Persons			Help provided by
					Accident Location	Nature of Accident	Classification of Accident	Causes	Load condition of vehicle	Road Condition	Intersection type of condition	Weather Condition	Age of victim	Type of Victim	Type of Vehicle	Fatal	Major	Minor	
1	17-09-2025	107+800	20:35:00	F	NH-146B	Fatal	Rear End Collison	Over Speed		Good	Straight	Good	35		Bike	1	0	0	Ambulance
2																			
3																			

**Project Work Photos & Work Zone Safety**

---

---

# **Annexure I**

# SHAHGANJ BADI HIGHWAYS PVT. LTD.

No work due to Rain at Km. 135+000



No work due to Rain at Km. 140+300



# SHAHGANJ BADI HIGHWAYS PVT. LTD.

No work due to Rain at Km. 125+000 to 126+000



Girder Casting Work in Progress



# SHAHGANJ BADI HIGHWAYS PVT. LTD.

RE Panel Casting work in Progress at Km 107+500



Box Culvert Segment Casting work in Progress at Km 107+500

